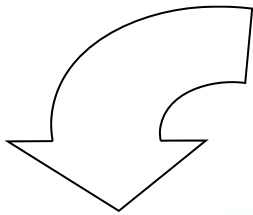


# Azer Revolve Countertops

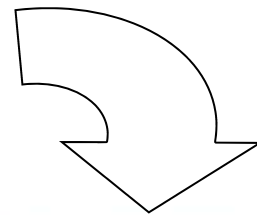
*For Convenient and Safe Movement of Your Bench top Equipment*

*Patent Pending*

Azer's new Revolve Countertops are designed to provide safe and efficient movement of your bench top equipment during standard maintenance and cleaning. Available in five standard sizes, the Azer Revolve Countertops can also be customized to fit your lab's individual needs.

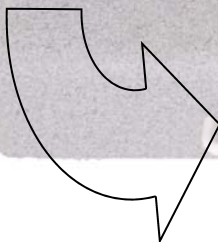


***Increased Efficiency***  
Eliminating the need to move heavy equipment cuts service time down substantially, keeping your lab running smoothly.

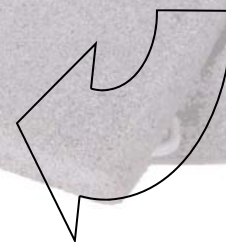


***Better Space Utilization***  
No need to add/change lab workspace, eliminates storage of a large, bulky cart, and equipment technicians can still access any part of the equipment.

***Improved Safety***  
Lab and service personnel will no longer have to climb on countertops and move heavy equipment to make simple adjustments or for routine maintenance.



***Higher Productivity***  
Place your equipment to best benefit your workflow, not dictated by the equipment manufacturer.

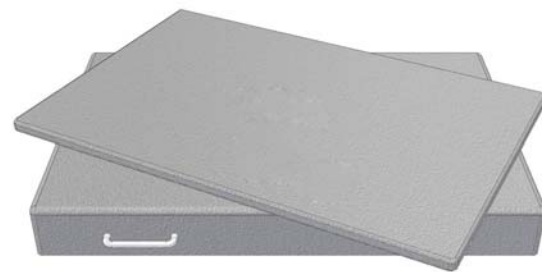


Visit our website for a video demonstration!  
[www.AzerSci.com](http://www.AzerSci.com)



With five standard sizes and custom options, no analyzer is too large or small to benefit from the *Azer Revolve*. Standard *Revolve* widths are 27", 31", 40", 45", and 48".

These sizes are compatible but not limited to the following popular analyzers:



- ESR2700** - 27" width                      Coulter MAXM<sup>®</sup>, HMX<sup>®</sup>, LH 500<sup>®</sup>
  
- ESR3100** - 31" width                      ACL<sup>®</sup> 100/200/1000/2000/3000/7000
  
- ESR4000** - 40" width                      Coulter STKS<sup>®</sup>, GEN\*S<sup>®</sup>, LH 750<sup>®</sup>,  
Abbott 3000<sup>®</sup> series
  
- ESR4500** - 45" width                      Benchtop coagulation instruments, IL<sup>®</sup> Futura,  
IL<sup>®</sup> 1000-3000, Advance<sup>®</sup>, etc.
  
- ESR4800** - 48" width                      Abbott Sapphire<sup>®</sup>



Catalog #	Description
ESR2700	Azer Revolve Countertop, 27" width
ESR3100	Azer Revolve Countertop, 31" width
ESR4000	Azer Revolve Countertop, 40" width
ESR4500	Azer Revolve Countertop, 45" width
ESR4800	Azer Revolve Countertop, 48" width

MAXM<sup>®</sup>, HMX<sup>®</sup>, LH 500<sup>®</sup>, ACL100/200/1000/2000/3000/7000<sup>®</sup>, STKS<sup>®</sup>, GEN\*S<sup>®</sup>, LH 750<sup>®</sup>, Abbott 3000<sup>®</sup>, IL Futura<sup>®</sup>, IL 1000-3000<sup>®</sup>, Advance<sup>®</sup>, and Abbott Sapphire<sup>®</sup> are registered trademarks of Coulter Corporation, Miami FL, and Abbott Laboratories, Chicago, IL, and Instrumentation Laboratories, Lexington, MA.

