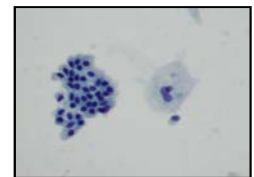
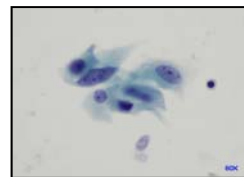
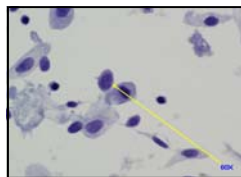
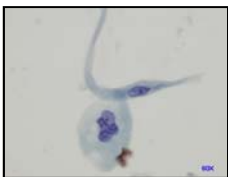
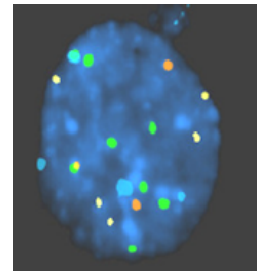


## The Next Generation of Liquid Cytology

Since its introduction in 2004, *Liqui-**PREP*** has become one of the most widely used liquid-based cytology (LBC) systems worldwide now used in 700+ labs in 54 countries. Azer Scientific introduces Liqui-**PREP** liquid cytology system now available in the United States!

Liqui-**PREP**'s world-wide adoption has been defined by a few unique and important features:

- ◆ No capital investment required with chemistry that utilizes centrifugal chemistry simply requiring a standard swing bucket centrifuge.
- ◆ Novel chemistry which is non-hazmat, reducing both shipping and disposal costs, a truly **Green** technology for cytology.
- ◆ No special plastics, expensive filters or expensive coated slides.
- ◆ Ideal for samples with scant cells since it utilizes the **entire specimen** with only one concentration step with no cell loss caused by filters or series of concentration steps. In most automated methods, dead space for sampling can result in loss of specimen and potentially clinically significant cells.
- ◆ *Liqui-**PREP*** **Perservative** is not only nonhazardous but also lytic for the lysis of RBC while the sample is in transit back to the lab. No pretreatment of bloody samples required to avoid filtration issues.
- ◆ Nucleic acid and protein preservation allows follow up on tests for molecular markers or IHC. Unlike some cytology system where the entire specimen is applied to the slide, *Liqui-**PREP*** utilizes only 50ul of the primary sample retaining excess sample for supplemental testing.
- ◆ Classic morphology is preserved since no methanol is used so nuclear swelling and morphology changes that may require retraining for even the most seasoned cytologist.



- ◆ **Better solutions through better chemistry = lower costs per test.** A important feature as healthcare dollars undergo more pressures to lower costs.

## The Next Generation of Liquid Cytology Non-Gyn Cytology Systems

### Have it your way!

Needs at the collection sites often vary; as do the processing of samples in the laboratory. To help you address those specific needs, we offer a variety of cytology products so you can choose the format that best addresses your needs.



Product No. 35-0300

**Product Number:** 35-0300

Processes per kit: ~300

### *Liqui-PREP™* Bulk Urine Cytology Processing Kit

Contains:

- ◆ 4 *Liqui-PREP™* Urine Preservative Solution (3,750ml/bottle)
- ◆ 6 *Liqui-PREP™* Slides (50 slides/per box)
- ◆ 1 *Liqui-PREP™* Cellular Base Solution (38ml/bottle)
- ◆ 1 Pump

Features:

- ▶ Most cost effective approach for collection.
- ▶ Minimizes potential for patient errors.
- ▶ Addresses specimen volume at collection site.



Product No. 35-0050

**Product Number:** 35-0050

Processes per kit: ~50

### *Liqui-PREP™* Urine Cytology Processing Kit

Contains:

- ◆ 50 *Liqui-PREP™* Urine Preservative Solution (55 ml/urine cup)
- ◆ 1 *Liqui-PREP™* Slides (50 slides/box)
- ◆ 1 *Liqui-PREP™* Cellular Base Solution (10 ml/bottle)

Features:

- ▶ Predispensed **Urine Preservative** minimizes staff errors.
- ▶ Simple unitized approach.
- ▶ Reduces sample exposure & potential leakage in transport.



Product No. 30-100B1

**Product Number:** 30-100B1

Processes per kit: ~100

### *Liqui-PREP™* Cytology Processing Kit

Contains:

- ◆ 2 *Liqui-PREP™* Preservative Solution (990 ml/bottle).
- ◆ 2 *Liqui-PREP™* Slides (50 slides/box).
- ◆ 2 *Liqui-PREP™* Cellular Base Solution (26 ml/bottle).

Features:

- ▶ Flexible Preservative volume to adjust for sample type
- ▶ For small volume samples (i.e.FNA, CSF, synovials, etc)
- ▶ Cell Base to adjust cell density based upon cell recovery.