

LIFE SCIENCE RESEARCH 2023

VOLUME 2

ExacTip™ Pipette Tips

See our line of ExacTip™ pipette tips available in filtered and non-filtered options. Page 4.

Glass Test Tubes

Chemically inert borosilicate glass tubes with well rounded bottoms. See more on page 15.

Azer Nitrile Gloves

New nitrile examination gloves approved for use with chemotherapy drugs. Find out more on page 16.

Azer

 | Nitrile Examination

Gloves

Tested for use with over
60) chemicals

- ✓ Single use medical grade nitrile gloves
- ✓ Not made with natural rubber latex, powder-free
- ✓ Tested for resistance of chemotherapy agent per ASTM D6978
- ✓ Ambidextrous
- ✓ Non-sterile

Find ordering information on page 16.

Available in 5 different sizes!

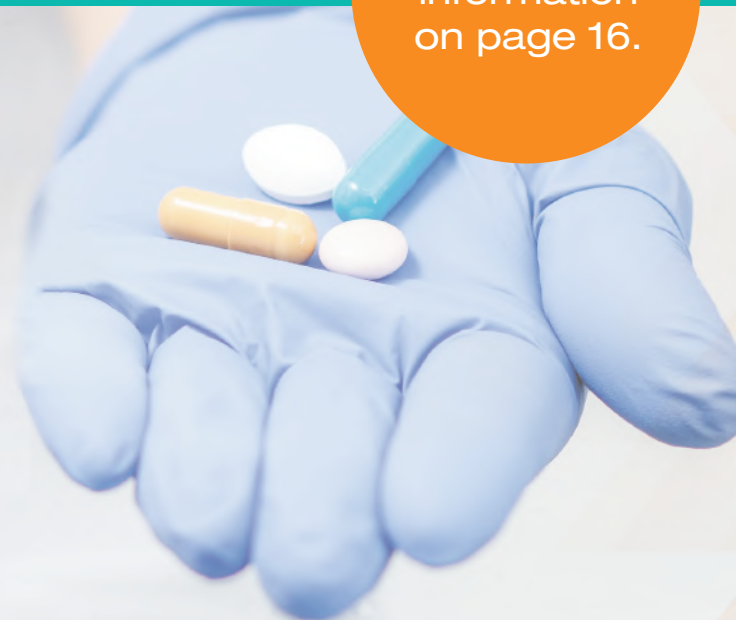


TABLE OF CONTENTS

OUR PRODUCTS

4 - 17 **General Laboratory Supplies**

18 - 24 **Cell Culture**

25 - 28 **PCR**

29 - 30 **DNA/RNA**

31 - 33 **Protein Research**

34 **Mass Spectrometry**

35 - 39 **Histology**

40 - 54 **Equipment**

CUSTOMER TESTIMONIAL



Our company started a business relationship with Azer in the "middle" of the COVID pandemic, as a means to help bridge the gap for consumables we saw were hard to source. Since then, we have found that they have a great array of products and can even source products that they do not carry on their website with great pricing. As time goes on, we find ourselves growing our business relationship with Azer and have had no issues with the quality of the products we have obtained from them. Their shipping is great and we haven't experienced any issues with getting our items in a reasonable time frame.

- Chris | Current Customer

★ Trustpilot



Share your Azer experience with us!

Connect with Us: [f](#) [t](#) [in](#) [v](#)



ExacTip™ Pipette Tips

Whatever pipette needs you may have, Azer Scientific has you covered with our brand of ExacTip™ pipette tips. Manufactured in a class 100,000 clean room and made from 100% polypropylene, these pipette tips are guaranteed to be DNase/RNase, and pyrogen free. Whether you need them for a lab, clinical, research, industrial, or more, the quality and reliability you'll get from these tips will be exactly what you need.

The pipette tips are designed to fit most popular pipettors and are sold in 8 or 10 racks of 96 tips each.

- Tips have low DNA and protein binding treatment
- Certified DNase/RNase/Pyrogen free
- Certified free of PCR inhibitors and trace metals
- Sterile individually wrapped racks of 96 tips

ExacTip™ Non-Filtered Pipette Tip Refills

Volume Range	Racked Cat. No.	Refill Cat. No.	UOM
0.1-10 µL	ES80630	ES80670	96/refill, 10/pack
10-200 µL	ES80635	ES80675	96/refill, 10/pack
100-1,000 µL	ES80638	ES80678	96/refill, 8/pack

ExacTip™ Filtered Pipette Tips

Cat. No.	Description	UOM
ES80650	0.5-10 µL Extended length filter tip, sterile, low retention	96 tips/rack, 10 racks/box
ES80652	1-20 µL Filter tip, sterile, low retention	96 tips/rack, 10 racks/box
ES80654	100 µL Filter tip, sterile, low retention	96 tips/rack, 10 racks/box
ES80655	10-200 µL Filter tip, sterile, low retention	96 tips/rack, 10 racks/box
ES80659	100-1,250 µL Filter tip, extended length 102 mm, sterile, graduated	96 tips/rack, 8 racks/box

ExacTip-L Tips | Compatible with the Lite Touch™

- Compatible with Lite Touch™ and xPIPETTE pipettors
- Made of 100% medical grade virgin polypropylene
- Barrier filter engineered to prevent interference with and contamination of your sample
- RNase/DNase, pyrogen, human DNA, and protease free
- Free from PCR inhibitors

Cat. No.	Description	UOM
ES80352	20 µL Filtered pipet tip, Azer LTS compatible, low retention, sterile	96/rack, 10 racks/pack
ES80355	200 µL Filtered pipet tip, Azer LTS compatible, low retention, sterile	96/rack, 10 racks/pack
ES80357	200 µL Filtered pipet tip, Azer LTS compatible, extended length, low retention, sterile	96/rack, 10 racks/pack
ES80358	1,000 µL Filtered pipet tip, Azer LTS compatible, low retention, sterile	96/rack, 10 racks/pack
ES80359	1,000 µL Filtered pipet tip, Azer LTS compatible, extended length, low retention, sterile	96/rack, 10 racks/pack



Gel Loading Pipette Tips

- Fits all major pipettors
- Includes 30 mm long, thin capillary sections for use in nuclease acid sequencing

Cat. No.	Description	UOM
ES81600G	200 µL Capillary tip for gel loading, racked	96/rack, 6 racks/pack
ES81600G-S	200 µL Capillary tip for gel loading, racked, sterile	96/rack, 6 racks/pack



NON-FILTERED TIPS



NON-FILTERED REFILLS



FILTERED TIPS

Pipette Tips

- Universal fit, compatible with most research-grade pipettors
- Standard and extended length options
- Durable cell rack can be repeatedly autoclaved
- Super-micron barrier inhibits pipettor and carry-over contamination
- Barrier will not trap liquid or contaminate samples if over pipetting
- Low binding polymer technology reduces binding of DNA, enzymes and proteins



Racked Tips

Cat. No.	Description	UOM
ES80130G	0.1 - 10 µL Ultra G tip	960 tips/pack
ES80130L	0.1 - 10 µL LongReach tip, extended length	960 tips/pack
ES80135	200 µL Pipette tip	960 tips/pack
ES80137	300 µL NX tip	960 tips/pack
ES80139	1,250 µL 1000XT Tip, extended length	768 tips/pack



Barrier Filter Tips

- Sterile

Cat. No.	Description	UOM
ES80150G	0.1 - 10 µL Ultra G filter tip	960 tips/pack
ES80150L	0.1 - 10 µL LongReach filter tip	960 tips/pack
ES80152	20 µL Filter tip	960 tips/pack
ES80154	100 µL Filter tip	960 tips/pack
ES80155	200 µL NX filter tip, extended length	960 tips/pack
ES80156	200 µL MultiGuard 3 filter tip, extended length	960 tips/pack
ES80157	300 µL XT Filter tip, extended length	960 tips/pack
ES80158	1,000 µL Filter tip	1000 tips/pack
ES80159	1,250 µL 1000XT Filter tip, extended length	768 tips/pack



Pipette Tip Reload System

- Quickly and easily loads 96 tips into empty racks
- Compatible with most manufacture's racks

Cat. No.	Description	UOM
ES80170L	0.1 - 10 µL LongReach tip refill, ext. length	960 tips/pack
ES80175	200 µL Pipette tip refill, yellow	960 tips/pack
ES80176	200 µL Pipette tip refill	960 tips/pack
ES80179	1,250 µL 1000XT Tip refill, ext. length	768 tips/pack
ES80170RACK	Refill rack, 10-300 µL Multimax™ refills	Each
ES80179RACK	Refill rack, 1,000/1,250 µL Multimax™ refills	Each



TipStation

- 192 tips per layer in a 2x96 format

Cat. No.	Description	UOM
ES80190L	0.1 - 10 µL LongReach tip station, extended length	960 tips/stack
ES80195	200 µL Pipette tip station, sterile	960 tips/stack

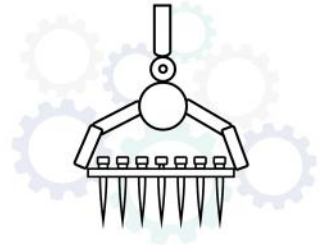




ExacTip™ Robotic ROBOTIC TIPS FOR AUTOMATION

Azer offers a comprehensive line of robotic tips for Hamilton® automation systems. These tips are manufactured to stringent specifications under strict process controls and assembled via automation to ensure consistent performance and quality. Tips are certified RNase/DNase-free and non-pyrogenic. Available in sterile, non-filtered, and filtered options. Conductive black polypropylene tips are available in 96-well hanging tip rack and nested tip rack.

- 96 tip/hanging tip rack format
- Quintuple packaging
- Certified DNase/RNase free, non-pyrogenic, sterile
- Filtered option (filtered with aerosol-resistant filters)
- Endotoxin-safe meets USP/FDA standards
- Complies with USP 3127 (Heavy Metal Contamination) standards
- Compatibility: Hamilton STAR®, STAR, STARlet, STARplus and Nimbus® workstations



Volume Range	Filtered Cat. No.	Non-Filtered Cat. No.	UOM
50 µL	ES81285-0050FRS	ES81285-0050RS	96/rack, 5 blister pack, 12 packs/case
300 µL	ES81285-0300FRS	ES81285-0300RS	96/rack, 5 blister pack, 12 packs/case
1000 µL	ES81285-1000FRS	ES81285-1000RS	96/rack, 5 blister pack, 8 packs/case

Tecan | blackKnights

Compatible with:

- Tecan: Genesis, Freedom EVO, MiniPrep, Cavro
- Qiagen/Corbett: CAS 1200/4200/4800, QIAgility
- Perkin Elmer (Packard): Multiprobe II, Janus
- Abbott Diagnostic: m2000



Packaging	50 µL	UOM	200 µL	UOM	1000 µL	UOM
blackKnights						
Tray, dual-pack	ES49006-0000	17280/case	ES49002-0000	17280/case	ES49003-0000	9600/case
Tray, blister 2-pack	-	-	-	-	ES49003-0006	2304/case
Tray, filter, blister 2-pack, sterile	ES49006-1106	2304/case	ES49002-1106	2304/case	ES49003-1106	2304/case
Tray, blister 5-pack	-	-	-	-	ES49003-0004	4800/case
Tip box compatible (box sold separately)	ES49006-0007	2304/case	ES49002-0007	2304/case	ES49003-0007	2304/case
Filter, tip box compatible (box sold separately)	ES49006-0107	2304/case	ES49002-0107	2304/case	ES49003-0107	2304/case
Tip box	ES45009-3000	10/pack	ES45009-3000	10/pack	ES45009-2000	5/pack

Qiagen | blackKnights

- Abbott Diagnostic: en4lisa
- bioMérieux: DaVinci
- Bio-Rad: Evolis
- Biotest: Quickstep
- Dade Behring (Siemens): BEP 2000 Advance
- DiaSorin: ETI-Max 3000
- Diffchamb: T4U
- Euroimmun: Euroimmun Analyzer
- Grifols: Triturus
- Human: Elisys Quattro
- Qiagen: Biorobot 3000, 8000, 9600, 9604, Biorobot universal
- Stratec: Gemini
- Virion\Serion: Immunomat TWINsystem

Packaging	300 µL	UOM	1100 µL	UOM
Tray, dual-pack	ES49000-0000	17280/case	ES49001-0000	9600/case
Tray, filter, blister 2-pack, sterile	-	-	ES49001-1106	2304/case

Olympus | blackKnights

- Beckman Coulter: AutoMate 1250/2550
- Olympus: OLA 2500

Packaging	1200 µL	UOM
Rack	ES49044-0000	1120/case
Rack, Filter	ES49044-0100	1120/case

All product names are registered by their respective owners:
Hamilton Microlab Star™, Nimbus®, and Vantage™ - Hamilton Company | Tecan - Tecan Trading AG | Qiagen - Qiagen | Olympus - Olympus America Inc

SARTORIUS Tacta® Mechanical Pipettes

Tacta® makes pipetting effortless and safe, while producing accurate and reliable results. It is designed to ergonomically fit in your hand, and it is easy and comfortable to use. All materials used for Tacta® have been carefully selected, and each component is designed to meet the highest standards.

Single-channel pipettes cover a volume range of 0.1 µL - 10,000 µL, and multichannel pipettes are available from 0.5 µL up to 300 µL volume.



Image Protected by Copyright and Provided by Courtesy of Sartorius AG

Cat. No.	Description	UOM
ES81952-103	Tacta® mechanical pipette, 1-ch, 0.1 - 3 µL	Each
ES81952-110	Tacta® mechanical pipette, 1-ch, 0.5 - 10 µL	Each
ES81952-120	Tacta® mechanical pipette, 1-ch, 2 - 20 µL	Each
ES81952-1100	Tacta® mechanical pipette, 1-ch, 10 - 100 µL	Each
ES81952-1200	Tacta® mechanical pipette, 1-ch, 20 - 200 µL	Each
ES81952-11M	Tacta® mechanical pipette, 1-ch, 100 - 1,000 µL	Each
ES81952-15M	Tacta® mechanical pipette, 1-ch, 500 - 5,000 µL	Each
ES81952-110M	Tacta® mechanical pipette, 1-ch, 1,000 - 10,000 µL	Each
ES81952-810	Tacta® mechanical pipette, 8-ch, 0.5 - 10 µL	Each
ES81952-8100	Tacta® mechanical pipette, 8-ch, 5 - 100 µL	Each
ES81952-8300	Tacta® mechanical pipette, 8-ch, 30 - 300 µL	Each
ES81952-1210	Tacta® mechanical pipette, 12-ch, 0.5 - 10 µL	Each
ES81952-12100	Tacta® mechanical pipette, 12-ch, 5 - 100 µL	Each
ES81952-12300	Tacta® mechanical pipette, 12-ch, 30 - 300 µL	Each

SARTORIUS Tacta® Mechanical Pipettes Multipacks

Multipacks combine a set of Tacta® single-channel or multi-channel mechanical pipettes with matching tip trays and useful accessories. Sartorius Tacta® mechanical pipette multipacks provide the best alternative to replace your used mechanical pipettes.

Each pack comes with pipettes, a rack of tips, and pipette stand.



Image Protected by Copyright and Provided by Courtesy of Sartorius AG

Cat. No.	Description	UOM
ES81952-3PKMX	Tacta® 3-pack Max (100 to 1,000 µL, 500 to 5,000 µL, 1,000 to 10,000 µL)	Each
ES81952-3PK1	Tacta® 3-pack, 10 (0.5 to 10 µL, 10 to 100 µL, 100 to 1,000 µL)	Each
ES81952-3PK2	Tacta® 3-pack, 20 (2 to 20 µL, 20 to 200 µL, 100 to 1,000 µL)	Each
ES81952-3PK3	Tacta® pipette multipack 3 (0.5 to 10 µL, 20 to 200 µL, 100 to 1,000 µL and 8-ch 30 to 300 µL)	Each
ES81952-4PK1	Tacta® 4-pack, 20 (0.5 to 10 µL, 2 to 20 µL, 20 to 200 µL, 100 to 1,000 µL)	Each
ES81952-4PK2	Tacta® 4-pack, 100 (0.5 to 10 µL, 10 to 100 µL, 20 to 200 µL, 100 to 1,000 µL)	Each
ES81952-5PK1	Tacta® pipette multipack 5-pack (0.5 to 10 µL, 10 to 100 µL, 20 to 200 µL, 100 to 1,000 µL, 500 to 5,000 µL)	Each
ES81952-5PK2	Tacta® pipette multipack 5-pack, 20 (2 to 20 µL, 10 to 100 µL, 20 to 200 µL, 100 to 1,000 µL, 500 to 5,000 µL)	Each



SARTORIUS Picus® Electronic Pipettes

Picus® offers perfect pipetting experience with superior ergonomics, efficiency, and safety. Fully electronic operations guarantee consistent, user-independent results, and the pipette's lightweight, comfortable design gives you utmost pipetting convenience. With multiple pipetting modes, you can perform your liquid handling tasks faster than with mechanical pipettes.

Single-channel models cover a volume range of 0.2 µL - 10,000 µL, and multichannel pipettes are available from 0.2 µL up to 1,200 µL.

Cat. No.	Description	UOM
ES81953-110	Picus® electronic pipette, 1-ch, 0.2-10 µL	Each
ES81953-1120	Picus® electronic pipette, 1-ch, 5-120 µL	Each
ES81953-1300	Picus® electronic pipette, 1-ch, 10-300 µL	Each
ES81953-11M	Picus® electronic pipette, 1-ch, 50-1,000 µL	Each
ES81953-15M	Picus® electronic pipette, 1-ch, 100-5,000 µL	Each
ES81953-110M	Picus® electronic pipette, 1-ch, 500-10,000 µL	Each
ES81953-810	Picus® electronic pipette, 8-ch, 0.2-10 µL	Each
ES81953-8120	Picus® electronic pipette, 8-ch, 5-120 µL	Each
ES81953-8300	Picus® electronic pipette, 8-ch, 10-300 µL	Each
ES81953-81200	Picus® electronic pipette, 8-ch, 50-1,200 µL	Each
ES81953-1210	Picus® electronic pipette, 12-ch, 0.2-10 µL	Each
ES81953-12120	Picus® electronic pipette, 12-ch, 5-120 µL	Each
ES81953-12300	Picus® electronic pipette, 12-ch, 10-300 µL	Each
ES81953-121200	Picus® electronic pipette, 12-ch, 50-1,200 µL	Each



Image Protected by Copyright and Provided by Courtesy of Sartorius AG

SARTORIUS Picus® Nxt Electronic Pipettes

Picus® Nxt is a step above the Picus® with added features like user customizable protocols, password protection, and calibration reminders. When conformity to the strictest regulations is needed, Picus® Nxt can take your compliance to the next level with added certification and safety features.

Single-channel models cover a volume range of 0.2 µL - 10,000 µL, and multichannel models a range of 0.2 µL - 1,200 µL.

Cat. No.	Description	UOM
ES81954-110	Picus® Nxt electronic pipette, 1-ch, 0.2 - 10 µL	Each
ES81954-1120	Picus® Nxt electronic pipette, 1-ch, 5 - 120 µL	Each
ES81954-1300	Picus® Nxt electronic pipette, 1-ch, 10 - 300 µL	Each
ES81954-11M	Picus® Nxt electronic pipette, 1-ch, 50 - 1,000 µL	Each
ES81954-15M	Picus® Nxt electronic pipette, 1-ch, 100 - 5,000 µL	Each
ES81954-110M	Picus® Nxt electronic pipette, 1-ch, 500-10,000 µL	Each
ES81954-810	Picus® Nxt electronic pipette, 8-ch, 0.2 - 10 µL	Each
ES81954-8120	Picus® Nxt electronic pipette, 8-ch, 5 - 120 µL	Each
ES81954-8300	Picus® Nxt electronic pipette, 8-ch, 10 - 300 µL	Each
ES81954-81200	Picus® Nxt electronic pipette, 8-ch, 50 - 1,200 µL	Each
ES81954-1210	Picus® Nxt electronic pipette, 12-ch, 0.2 - 10 µL	Each
ES81954-12120	Picus® Nxt electronic pipette, 12-ch, 5 - 120 µL	Each
ES81954-12300	Picus® Nxt electronic pipette, 12-ch, 10 - 300 µL	Each
ES81954-121200	Picus® Nxt electronic pipette, 12-ch, 50 - 1,200 µL	Each



Image Protected by Copyright and Provided by Courtesy of Sartorius AG

xPIPETTE Single Channel Pipettes

Pipetting is a highly repetitive motion which can have lasting effects on your hand, wrist and shoulder. The xPIPETTE single channel pipette is designed to improve the ergonomics of traditional pipetting systems by reducing the forces you're exposed to during this repetitive process. The patented light force ejection system built into the xTIP4 and xPIPETTE produce the lowest ejection forces on the market, reducing your risk of developing repetitive stress injuries and muscle fatigue.

- Light spring force, improves ergonomics with every draw by reducing plunger forces
- Secure volume lock ensures accuracy for more reproducible results
- Large cushioned ejector
- Silicone cushion reduces dynamic stress, lowering ejection force
- Large button design reduces mechanical stresses when you eject
- Finger hook allows you to rest your hand in between pipetting cycles improving ergonomics

Cat. No.	Description	UOM
ES81949-2	0.2 - 2 μ L xPIPETTE single channel pipette	Each
ES81949-10	0.5 - 10 μ L xPIPETTE single channel pipette	Each
ES81949-20	2 - 20 μ L xPIPETTE single channel pipette	Each
ES81949-100	10 - 100 μ L xPIPETTE single channel pipette	Each
ES81949-200	20 - 200 μ L xPIPETTE single channel pipette	Each
ES81949-1M	100 - 1,000 μ L xPIPETTE single channel pipette	Each



xPIPETTE Multi Channel Pipettes

- Calibrated to ISO 8655 standards with the xTIP4
- Fully compatible with Rainin LTS tips
- Accurate and precise with low channel to channel variation for reproducible results
- Light spring forces and the precision engineered design produces a smooth and controlled aspiration with perfect balance
- The padded ejector button (symmetrically designed for left and right hand users) reduces the dynamic forces and vibrations your hand is exposed to during ejection

Cat. No.	Description	UOM
ES81949-8-10	0.5-10 μ L xPIPETTE 8-channel pipette	Each
ES81949-8-20	2-20 μ L xPIPETTE 8-channel pipette	Each
ES81949-8-200	20-200 μ L xPIPETTE 8-channel pipette	Each
ES81949-8-300	20-300 μ L xPIPETTE 8-channel pipette	Each
ES81949-12-10	0.5-10 μ L xPIPETTE 12-channel pipette	Each
ES81949-12-20	2-20 μ L xPIPETTE 12-channel pipette	Each
ES81949-12-200	20-200 μ L xPIPETTE 12-channel pipette	Each
ES81949-12-300	20-300 μ L xPIPETTE 12-channel pipette	Each





AzerPro Repeating Pipettor

- Offers 9 tip sizes, 10 volume adjustments and 90 program steps
- Maintenance-free, does not require additional resources such as power supply or batteries
- Easy-moving dosing button & lightweight design allows long dosing series to be dispensed conveniently
- Specially designed to precisely align with our syringe tips
- Resistant to common laboratory chemicals



Cat. No.	Description	UOM
ES42020-0000	AzerPro repeating pipettor	Each

Sapphire Evolution Syringe Tips

- Designed for the AzerPro repeating pipettor
- Available in a wide range of sizes, for dispensing volumes from 0.1 mL - 50 mL
- Provides reliable, and repeatable results for a wide range of liquids including: viscous, infectious, and volatile
- Available in sterile and non-sterile options
- All sterile tips are individually wrapped and certified to be pyrogen, ATP, and RNase/DNase free



Size	Non-Sterile	Sterile	UOM
	Cat. No.	Cat. No.	
0.1 mL	ES40017-0000	ES40017-0011	100/pack
0.2 mL	ES40017-0001	ES40017-0012	100/pack
0.5 mL	ES40017-0003	ES40017-0013	100/pack
1.0 mL	ES40017-0004	ES40017-0014	100/pack
2.5 mL	ES40017-0005	ES40017-0015	100/pack
5.0 mL	ES40017-0006	ES40017-0016	100/pack
10.0 mL	ES40017-0007	ES40017-0017	100/pack
25.0 mL	ES40017-0009	ES40017-0019	25/pack
50.0 mL	ES40017-0010	ES40017-0020	25/pack

Evolution Syringe Tips (standard and sterile), are suitable for: Ripette®, Ripette®pro, STEPMATE, Minilab 100/101, Multipette® 4780, Multipette® plus, Multipette® M4, HandyStep®, HandyStep® electronic, Distriman

Adapters

Cat. No.	Description	UOM
ES43001-0147	Adapter for 25 mL tip	Each
ES43001-0148	Adapter for 50 mL tip	Each



All product names are registered by their respective owners:
HandyStep® - Brand GmbH & Co. KG | bioclean®, Ripette® - Ritter GmbH | eLine™ - Sartorius AG | RepeatOne® - Starlab AG | Distriman®, Repetman® - Gilson Inc. | Multipette® - Eppendorf AG

Sapphire Reservoirs

Azer Scientific's Sapphire single & multi well reservoirs have a low profile design, suitable for small volume robotic tips used in high flux instruments. In the automatic pipetting process, the reservoir can perfectly overcome the surface tension of the liquid and minimize residual liquid. Reservoirs use high quality, imported PP material for added stability, ensuring no chemical reactions with test reagents.

- Can be stored at -80°C
- Low heavy metal content
- Compatible with DMSO and inert to water
- Certified DNase/RNase and pyrogen Free
- Conformed to ANSI/SBS Standards



Cat. No.	Description	UOM
ES81981	Sapphire reservoir, multi well, 8 channel troughs, non-sterile	10/pack
ES81983	Sapphire reservoir, multi well, 12 channel troughs, non-sterile	10/pack
ES81985	Sapphire reservoir, single well, 96 channel troughs, non-sterile	10/pack
ES81988	Sapphire reservoir, single well, 384 channel troughs, non-sterile	10/pack
ES81981-S	Sapphire reservoir, multi well, 8 channel troughs, sterile	10/pack
ES81983-S	Sapphire reservoir, multi well, 12 channel troughs, sterile	10/pack
ES81985-S	Sapphire reservoir, single well, 96 channel troughs, sterile	10/pack
ES81988-S	Sapphire reservoir, single well, 384 channel troughs, sterile	10/pack

Pipetting Reservoirs



- Made of virgin medical grade polystyrene
- Raised sections on the reservoir walls for non-stick stacking
- Tapered "v" bottom to minimize reagent loss and maximize recovery
- Designed to be used with 8-channel and 12-channel pipettes based on your needs

Cat. No.	Description	UOM
ES81918NS	25 mL, Bulk, non-sterile	100/pack
ES81918IW	25 mL, Individually wrapped, sterile	100/pack
ES81918ST	25 mL, Bulk, sterile (5/bag)	200/pack
ES81923S-D	50mL, Divided (5/bag)	200/pack
ES81928NS	50 mL, Bulk, non-sterile	100/pack
ES81928IW	50 mL, Individually wrapped, sterile	100/pack
ES81928ST	50 mL, Bulk, sterile (5/bag)	200/pack

8-Channel Pipetting Reservoirs



Our 8-channel compatible reservoirs are the ideal reservoir for any lab utilizing 8-channel pipettes. The strict inner dimensions are designed specifically for 8-channels, thus conserving space and reagent over its longer 12-channel counterparts. Thinner design minimizes reagent exposure and usage. The only reservoir that is tailor-made for your 8-channel instrument.

Cat. No.	Description	UOM
ES81907-8	10 mL, Bulk, non-sterile	300/pack
ES81905-8	10 mL, Individually wrapped, sterile	100/pack
ES81903-8	10 mL, Sterile (5/bag)	200/pack
ES81911-8	25 mL, Bulk, non-sterile	100/pack
ES81915-8	25 mL, Individually wrapped, sterile	100/pack
ES81913-8	25 mL, Sterile (5/bag)	200/pack



SARTORIUS Vivaspin® Turbo 4 PES



Cat. No.	Cut off	UOM
ES50106-0003-25	3 kDa MWCO	25
ES50106-0003-100	3 kDa MWCO	100
ES50106-0005-25	5 kDa MWCO	25
ES50106-0005-100	5 kDa MWCO	100
ES50106-0010-25	10 kDa MWCO	25
ES50106-0010-100	10 kDa MWCO	100
ES50106-0030-25	30 kDa MWCO	25
ES50106-0030-100	30 kDa MWCO	100
ES50106-0050-25	50 kDa MWCO	25
ES50106-0050-100	50 kDa MWCO	100
ES50106-0100-25	100 kDa MWCO	25
ES50106-0100-100	100 kDa MWCO	100

- Complete recoveries
- Fastest concentrations
- Highest chemical resistance
- Optimal sample to membrane compatibility

Materials	Body	Styrene butadiene copolymer
	Filtrate vessel	Polypropylene
	Concentrator cap	Polypropylene
	Membrane	Polyethersulfone
Dimensions	Total length (concentrator insert)	75.5 mm
	Total length (assembled)	122.5 mm
	Diameter (concentrator insert)	14.6 mm
	Active membrane area	3.2 cm ²
	Hold up volume of membrane	<10 µL
	Dead-stop volume in swing out	40 µL
	Dead-stop volume in fixed rotor	30 µL
Concentrator capacity	Swing bucket rotor	4 mL
	Fixed angle rotor (25°)	4 mL
Maximum speed (3 kDa - 50 kDa)	Swing bucket rotor	4,000 xg
	Fixed angle rotor (25°)	7,500 xg
Maximum speed (100 kDa)	Swing bucket rotor	3,000 xg
	Fixed angle rotor (25°)	5,000 xg
Sterilization	EtO or 70% EtOH	
Removal of endotoxins [Depyrogenization]	1N NaOH	

SARTORIUS Vivaspin® Turbo 15 RC



Cat. No.	Cut off	UOM
ES50108-0005-12	5,000 MWCO	12
ES50108-0005-48	5,000 MWCO	48
ES50108-0010-12	10,000 MWCO	12
ES50108-0010-48	10,000 MWCO	48
ES50108-0030-12	30,000 MWCO	12
ES50108-0030-48	30,000 MWCO	48
ES50108-0050-12	50,000 MWCO	12
ES50108-0050-48	50,000 MWCO	48
ES50108-0100-12	100,000 MWCO	12
ES50108-0100-48	100,000 MWCO	48

- Complete recoveries
- Fastest concentrations
- Highest chemical resistance
- Easy retentate collection
- Graduated and markable

Materials	Body	Styrene butadiene copolymer
	Filtrate vessel	Polypropylene
	Concentrator cap	Polypropylene
	Membrane	Regenerated cellulose (RC)
Dimensions	Total length (concentrator insert)	77 mm
	Total length (in tube with cap)	118 mm
	Diameter (concentrator insert)	27 mm
	Active membrane area	8.1 cm ²
	Hold up volume of membrane	<10 µL
	Dead-stop volume in swing out	100 µL
	Dead-stop volume in fixed rotor	60 µL
Concentrator capacity	Swing bucket rotor	15 mL
	Fixed angle rotor (25°)	9 mL
Maximum speed (5 kDa - 50 kDa)	Swing bucket rotor	4,000 xg
	Fixed angle rotor (25°)	7,500 xg
Maximum speed (100 kDa)	Swing bucket rotor	3,000 xg
	Fixed angle rotor (25°)	4,000 xg
Sterilization	EtO or 70% EtOH	
Membrane passivation	5% Tween 20 5% SDS 5% Triton X-100	

Centrifuge Tubes



RNase • DNase • Pyrogen
STERILE
FREE!

- Made of ultra-clear polypropylene
 - Features printed graduation marks
 - Large, white writing surface
 - Usable temperature range of -86°C to 121°C
- Max RCF (15 mL):** 12,000 x g
Max RCF (50 mL): 15,000 x g

Cat. No.	Description	UOM
ES-9151N	15 mL Tube, flat cap, sterile, racked	50/rack, 500/case
ES-9152N	15 mL Tube, flat cap, sterile, bulk	50/bag, 500/case
ES-9501N	50 mL Tube, flat cap, sterile, racked	25/rack, 500/case
ES-9502N	50 mL Tube, flat cap, sterile, bulk	25/bag, 500/case

Conical Bottom Centrifuge Tube



- Superior performance, ease of use
- Leak proof design w/ easy on/off cap
- Clear accurate graduations
- Large white marking spot
- RNase/DNase-free, non-pyrogenic & sterile
- Medical grade polypropylene

\$61.00
BOGO

Cat. No.	Description	UOM
ES84123	15 mL Tube, PP, conical bottom, sterile	500/case

Sapphire 5 mL Screw Top Centrifuge Tube



RNase & DNase
FREE

- Made of virgin polypropylene
 - Similar to 15 mL, but requires 60% less space
 - Dual graduations at 0.2 mL and 0.5 mL
 - 20 mm screw cap closes with a single 360° turn
 - Usable temperature range of -86°C to 110°C
- Max RCF:** 25,000 x g

Cat. No.	Description	UOM
ES84680-SC	5 mL Tube, bulk, non-sterile	500/case
ES84682-SC	5 mL Tube, racked, sterile	500/case

Centrifuge Tube Racks

- Collapsible, combo and single racks can be stacked in open or closed position
- Imprinted grid for organization



Cat. No.	Description	UOM
ES82912	Combo rack, blue	2/pack
ES82913	Combo rack, pink	2/pack
ES82932	Single rack for 15 mL tubes, purple	2/pack
ES82934	Single rack for 50 mL tubes, green	2/pack
ES87245	Multi-tube rack, holds 50/15/1.5/2.0/0.5 mL tubes, blue	5/pack, 4 pack/case

Sapphire 5 mL Centrifuge Tube

- Made from high-clarity, polypropylene
- Syringe-permeable cap
- Dual graduations at 0.2 mL and 0.5 mL

- Cap provides secure seal from -86°C to +80°C
 - Locking cap prevents tubes from opening during high heat applications (sold separately)
- Max RCF:** 25,000 x g



Cap Lock

Cat. No.	Description	UOM
ES84682	5 mL Tube, sterile, clear	20/pack, 10 packs/case
ES84680	5 mL Tube, non-sterile, clear	100/pack, 2 packs/case
ES84680-B	5 mL Tube, non-sterile, blue	100/pack, 2 packs/case
ES84680-G	5 mL Tube, non-sterile, green	100/pack, 2 packs/case
ES84680-R	5 mL Tube, non-sterile, red	100/pack, 2 packs/case
ES84680-Y	5 mL Tube, non-sterile, yellow	100/pack, 2 packs/case
ES84688	Cap locks for 5 mL tubes	20/pack

RNase & DNase
FREE





Centrifuge Tubes, Opaque Black



- For use with light sensitive samples
- Feature large white labeling areas
- Conical bottom

Max RCF (1.5 mL): 18,000 x g

Max RCF (5 mL): 25,000 x g

Max RCF (15 mL): 12,000 x g

Max RCF (50 mL): 16,000 x g

Cat. No.	Description	UOM
ES4250-15BL	1.5 mL Microcentrifuge tube, black	500/case
ES84680BL	5 mL Snap top tube, black	200/case
ES84682-SC-BL	5 mL Screw top tube, black, racked, sterile	50/rack, 500/case
ES84461	15 mL Centrifuge tube, black, sterile	500/case
ES84465	50 mL Centrifuge tube, black, sterile	500/case

Low Bind Tubes



- RNase/DNase, pyrogen and DNA free
- Low adhesion surface for optimum sample yield
- Packaged in tamper-proof resealable safety-lock bags
- Graduated
- Autoclavable to 121°C

Cat. No.	Description	UOM
ES84631	0.6 mL Microcentrifuge tube w/ attached cap	500/pack
ES84634	1.5 mL Microcentrifuge tube w/ attached cap	500/pack
ES84637	2.0 mL Microcentrifuge tube w/ attached cap	500/pack

Sapphire Microcentrifuge Tubes



- Made from high-clarity, polypropylene
- Reinforced conical bottom
- Usable temperature range of -90°C to +121°C

Cat. No.	Description	UOM
ES84610	0.65 mL Microcentrifuge tube	1,000/bag
ES84641	1.7 mL Microcentrifuge tube	500/bag
ES84671	2.0 mL Microcentrifuge tube	400/bag

Inoculation Loops

- For sampling, urine counts, serial dilutions, and bacterial inoculation
- Smooth loop surface, a hexagonal shaft for easy gripping
- Sterile bag of 20, 50 bags/case
- Durable and flexible design for streaking and subsurface inoculation

Cat. No.	Description	UOM
ES49211	1 µL Inoculation loop, 200 mm long, sterile	1000/case
ES49216	10 µL Inoculation loop, 200 mm long, sterile	1000/case



Petri Dishes

Cat. No.	Size	Type	Features	UOM
ES3512	60 x 15 mm	Slipable	Vented for aerobic use	20/sleeve, 500/case
ES3515	60 x 15 mm	Semi-stackable	Vented for aerobic use	20/sleeve, 500/case
ES3505	60 x 15 mm	Fully-stackable	Vented for aerobic use	20/sleeve, 500/case
ES3510	60 x 15 mm	Slipable	Non-vented	20/sleeve, 500/case
ES3501	100 x 15 mm	Slipable	Non-vented	21/sleeve, 525/Case
ES3561	100 x 15 mm	Semi-stackable	Non-vented	21/sleeve, 525/Case
ES3521	100 x 20 mm	Fully-stackable	"Deep" style, non-vented	16/sleeve, 400/case
ES3527	100 x 100 mm	-	Square plate, with grid	20/sleeve, 500/case



- Made of optically clear polystyrene
- Sterile
- Mono plate

20 mL Glass Storage Vials



- Clear glass, 1st hydrolytic class
- Screw neck vial
- For sample storage
- Flat bottom
- Vial height: 57 mm

Cat. No.	Description	UOM
ES10704-N24-20ML	20 mL Pre-sealed vial-closure combination	100/pack
ES10713-N24-20ML	20 mL Screw neck vial	100/pack
ES10732-N24	Screw cap, PP	100/pack

Pasteur Pipets

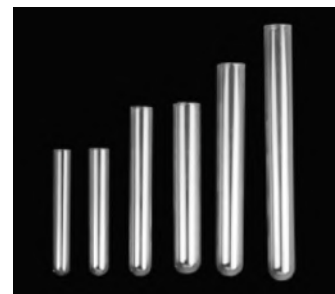


- In compliance with ISO7712 standard
- With long and fine tip
- Constricted upper suction end to retain a cotton plug
- For single use

Cat. No.	Description	UOM
ES81242	150 mm (5 in) Pasteur pipets	1000/pack
ES81247	230 mm (9 in) Pasteur pipets	1000/pack
ES89161-0001	1 mL Latex bulbs	72/pack
ES89161-0002	2 mL Latex bulbs	72/pack

Glass Test Tubes

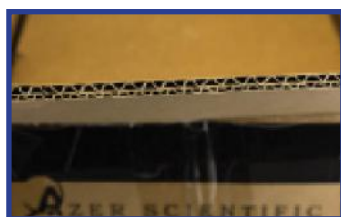
- Chemically inert tubes made from borosilicate glass
- Tubes have well-rounded bottoms and smooth, fire-polished rims
- Rigidly controlled dimension specifications for consistent results
- Boxes are designed to fit into most test tube dispensers
- Tubes are specially packaged to keep them particle free and prevent breakage



Cat. No.	Description	UOM
ES82756	Test tube, borosilicate glass, 10 x 75 mm, 3 mL volume	250/pack, 1000/case
ES82706	Test tube, borosilicate glass, 12 x 75 mm, 5 mL volume	250/pack, 1000/case
ES82716	Test tube, borosilicate glass, 13 x 100 mm, 7 mL volume	250/pack, 1000/case
ES82766	Test tube, borosilicate glass, 16 x 100 mm, 10 mL volume	250/pack, 1000/case
ES82786	Test tube, borosilicate glass, 16 x 125 mm, 14 mL volume	250/pack, 1000/case
ES82790	Test tube, borosilicate glass, 16 x 150 mm, 16 mL volume	250/pack, 1000/case
ES82792	Test tube, borosilicate glass, 18 x 150 mm, 25 mL volume	100/pack, 600/case

SafeShip™ Packaging

1. Double-wall cardboard for enhanced durability.
2. A double-wall tray on the top & bottom tightly secures the internal boxes.
3. Tubes are oriented vertically so they do not grind together.
4. Dividers and liners prevent internal boxes from shifting.



Caps for Glass Culture Tubes



- Fit plain end culture tubes and flasks with DeLong style necks or ports
- Molded from durable, autoclavable polypropylene (PP)
- Ridges inside cap provide secure grip and gas exchange
- Maintain sterility without cotton plugging
- Reduce sample evaporation compared to cotton plugging
- Provide same evaporation and sterility benefits as stainless steel closures

Max tube diameter	Cat No.					UOM
	Natural	Blue	Green	Red	Yellow	
13 mm	ES82592-13MMC	ES82592-13MMB	ES82592-13MMG	ES82592-13MMR	ES82592-13MMY	100/bag, 1000/case
16 mm	ES82592-16MMC	ES82592-16MMB	ES82592-16MMG	ES82592-16MMR	ES82592-16MMY	100/bag, 1000/case
18 mm	ES82592-18MMC	ES82592-18MMB	ES82592-18MMG	ES82592-18MMR	ES82592-18MMY	100/bag, 1000/case
20 mm	ES82592-20MMC	ES82592-20MMB	ES82592-20MMG	ES82592-20MMR	ES82592-20MMY	100/bag, 1000/case
25 mm	ES82592-25MMC	ES82592-25MMB	ES82592-25MMG	ES82592-25MMR	ES82592-25MMY	100/bag, 1000/case

Culture Tubes with Snap Caps

- Dual position snap caps provide aerobic or anaerobic storage of samples
- Autoclavable, freezable, and sterile

Max RCF: Polypropylene (PP) 3,000 RPM Polystyrene (PS): 1,500 RPM

Cat. No.	Description	UOM
ES82100-DPS	5 mL Culture tube, PP, 12 x 75 mm, attached snap cap, sterile	25/bag, 20 bags/case
ES3434WC	5 mL Culture tube, PS, 12 x 75 mm, attached snap cap, sterile	25/bag, 20 bags/case
ES82191-DPS	15 mL Culture tube, PP, 17 x 100 mm, attached snap cap, sterile	25/bag, 20 bags/case
ES82091-DPS	15 mL Culture tube, PS, 17 x 100 mm, attached snap cap, sterile	25/bag, 20 bags/case

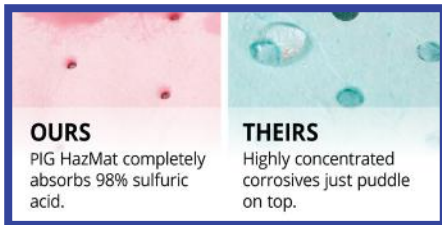




PIG® HazMat Chemical Absorbent Mat Pad



- Clean up big spills or persistent leaks of hazardous chemicals with our most popular mat weight
- Soaks up the widest range of acids, bases, corrosives, chemicals and unknown liquids
- Pink color is designated for hazardous chemicals and easy to identify in a spill emergency or clean-up
- Chemical-resistant mat won't degrade or cause a dangerous reaction upon contact with corrosive spills
- PIG® mats last 2x longer than competitive mats and won't rip, tear or fray even when saturated; liquids absorb quickly for faster, easier cleanups and safer workplaces
- Mats take on the properties of absorbed liquids always take proper precautions when handling saturated absorbents



OURS

PIG HazMat completely absorbs 98% sulfuric acid.

THEIRS

Highly concentrated corrosives just puddle on top.

Cat. No.	Description	UOM
ES86611-28	PIG® HazMat chemical absorbent mat pads, heavyweight	100/pack
ES86611-14	PIG® HazMat chemical absorbent mat pads, lightweight	100/pack
ES86611-40	PIG® HazMat chemical absorbent mat roll, 30 in x 150 ft, heavyweight	Each

Light Duty Task Wipes



- Low particulate, non-streak cleaning
- Extra absorbency performance
- Sensitive and delicate parts wiping
- Anti-static cover

Cat. No.	Description	UOM
ES86692	Azer light duty task wipers, small	280/box, 60 boxes/case
ES86694	Azer light duty task wipers, large	140/box, 15 boxes/case

Nitrile Plus | Biodegradable Nitrile Gloves



- Color: Black
- SW Grip
- 9.0 in length
- Tear-resistant cuff
- Thickness:
 - Finger: 5.6 mil, 0.14 mm
 - Palm: 5.0 mil, 0.13 mm
 - Cuff: 4.1 mil, 0.10 mm

Cat. No.	Description	UOM
ES86121S	Nitrile plus gloves, black, S	100/ box, 10 boxes/case
ES86121M	Nitrile plus gloves, black, M	100/box, 10 boxes/case
ES86121L	Nitrile plus gloves, black, L	100/box, 10 boxes/case
ES86121XL	Nitrile plus gloves, black, XL	100/box, 10 boxes/case

Azer | Nitrile Examination Gloves



Thickness:

- Finger: 4.5 ± .2 mil
- Palm: 3.0 ± .2 mil
- Cuff: 2.5 ± .2 mil

- Single use medical grade nitrile gloves
- Not made with natural rubber latex, powder-free
- Tested for resistance of chemotherapy agent per ASTM D6978
- Ambidextrous
- Non-sterile

Cat. No.	Description	UOM
ES86101XS	Nitrile examination gloves, blue, extra-small	200/box, 10 boxes/case
ES86101S	Nitrile examination gloves, blue, small	200/box, 10 boxes/case
ES86101M	Nitrile examination gloves, blue, medium	200/box, 10 boxes/case
ES86101L	Nitrile examination gloves, blue, large	200/box, 10 boxes/case
ES86101XL	Nitrile examination gloves, blue, extra-large	180/box, 10 boxes/case

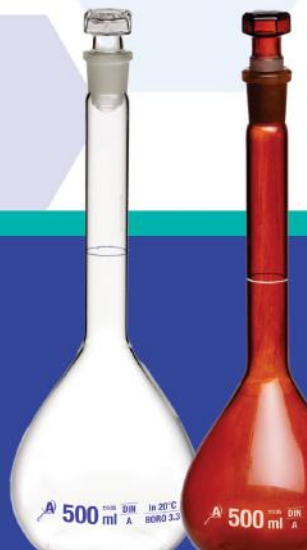
GLASSWARE



CLAMPS & FRAMES

EVERYTHING GLASS YOU COULD ASK FOR.

SCAN ME
TO LEARN MORE



- BEAKERS • PETRI DISHES • TEST TUBES
- VOLUMETRIC FLASKS • MEASURING CYLINDERS • CULTURE MEDIA TUBES
- SEROLOGICAL PIPETTES • ERLLENMEYER FLASKS • FILTRATION ASSEMBLY SET
- ROUND BOTTOM FLASKS

Azer Broken Glass Keepers

\$28.50
While Supplies Last.



- Sturdy, corrugated cardboard
- Assembly instructions on each box
- Floor model

Cat. No.	Description	UOM
ES86687	Azer broken glass keepers w/ lids and plastic liners	6/pack

Lab Coats



- Features three pockets and a front snap closure
 - Protects against splash and spray of blood, body fluids, or chemicals
 - Material is anti-static, with high fluid-resistance
 - Available in extra-small, small, medium, large, extra-large
- For ordering, add appropriate size abbreviation to end of Cat. No.

Cat. No.	Description	UOM
ES86407W	Lab coat, white, Lvl 3 SMS fabric	100/case
ES86407B	Lab coat, blue, Lvl 3 SMS fabric	100/case



AzerPette™ Automated Pipette Filler

- Lightweight design with attached kickstand
- Variable speed control
- Cordless and rechargeable, with up to 8 hours of continuous operation
- For pipettes from 1 mL to 100 mL



Cat. No.	Description	UOM
ES81098	AzerPette™ automated pipette filler	Each

Sapphire Serological Pipettes



- Sterile, plugged, and individually wrapped
- Calibrated “to deliver”, highest degree of accuracy
- Filter plug made of breathable polyester fiber that creates a better liquid barrier than cotton

Size	Individual		Bulk	
	Cat No.	UOM	Cat No.	UOM
1 mL (Yellow)	ES81019	1000/pack	ES81019BLK	25/bag, 1,000/pack
2 mL (Green)	ES81029	1000/pack	ES81029BLK	25/bag, 700/pack
5 mL (Blue)	ES81039	200/pack	ES81039BLK	25/bag, 500/pack
10 mL (Orange)	ES81049	200/pack	ES81049BLK	25/bag, 500/pack
25 mL (Red)	ES81059	200/pack	ES81059BLK	25/bag, 200/pack
50 mL (Black)	ES81069	100/pack	ES81069BLK	25/bag, 100/pack
100 mL (Purple)	ES81079	100/pack	ES81079BLK	25/bag, 100/pack

ALI-Q 2 Aliquotting Pipette Controller



- On-board calibration software
- Light weight with removable kickstand
- Highly reproducible accuracy with the press of one button
- Use any size and any brand of serological pipettes
- Plus aspirate and dispense as you're used to
- A speed dial for adjusting aliquoting speed (variable speed model only)

Cat. No.	Description	UOM
ES81092	Fast speed, ALI-Q 2 aliquotting pipette controller	Each
ES81092LS	Slow speed, ALI-Q 2 aliquotting pipette controller	Each
ES81092VS	Variable speed, ALI-Q 2 aliquotting pipette controller	Each

Wobble-not Serological Pipettes



- Superior in ergonomics and performance
- Has two-tiered step design, decreases insertion force while increasing pipet stability
- Maximum stability for your pipetting, less drip
- Individually wrapped in paper/plastic sleeves

Size	Individual		Bulk	
	Cat No.	UOM	Cat No.	UOM
5 mL	ES81035	50/bag, 200/case	ES81035BLK	500/case
10 mL	ES81045	50/bag, 200/case	ES81045BLK	400/case
25 mL	ES81055	25/bag, 200/case	ES81055BLK	150/case
50 mL	ES81065	25/bag, 100/case	ES81065BLK	100/case
10 mL (Short)	ES81047	25/bag, 200/case	-	-
25 mL (Short)	ES81057	25/bag, 100/case	-	-

Fetal Bovine Serum

- Storage: -20°C (product ships on dry ice)
- Virus screened
- Mycoplasma tested
- Triple 0.1 micron filtered
- Low hemoglobin lots (<15mg/dL) and endotoxin lots (<1.0 EU/mL) may be available
- Collected entirely from USDA licensed abattoirs and processed within the United States

Cat. No.	Description	UOM
ES56810	Fetal bovine serum, US source, 500 mL	Each
ES56811	Fetal bovine serum, US source, heat inactivated, 500 mL	Each
ES56812	Fetal bovine serum, USDA approved, non-US source, 500 mL	Each
ES56813	Fetal bovine serum, USDA approved, heat inactivated, non-US source, 500 mL	Each
ES56815	Fetal bovine serum, charcoal dextran treated, 500 mL	Each
ES56817	Fetal bovine serum, tetracycline free, 500 mL	Each
ES56818	Fetal bovine serum, tetracycline free, heat inactivated, 500 mL	Each



Centrifuge Tube Filter Systems



- Directly filters into a 50 mL tube
- PES membrane for high flow and low binding
- Two membrane pore sizes available: 0.22 or 0.45 µm
- Includes tube filter, centrifuge tube, and cap
- Sterile and individually packaged
- Includes 1 centrifuge tube stand with each case of centrifuge tube filter systems

Cat. No.	Description	UOM
ES56520	50 mL, Centrifuge tube filter, PES, 0.22 µm, sterile	12/case
ES56540	50 mL, Centrifuge tube filter, PES, 0.45 µm, sterile	12/case

Filter Systems, PES Filter Material



- Angled hose barb adapter fits three size hose diameters and prevents the filter from tipping
- Polyethersulfone (PES) membrane for high flow and low binding
- Filter systems include bottle top filter and solution bottle with cap
- Sterile and individually packaged

		.22 µm	.45 µm		
Cat. No.	Cat. No.	Description	UOM		
ES56521	ES56541	150 mL, Filter system, PES, 50 mm, sterile	12/case		
ES56523	ES56543	250 mL, Filter system, PES, 75 mm, sterile	12/case		
ES56525	ES56545	500 mL, Filter system, PES, 90 mm, sterile	12/case		
ES56527	ES56547	1,000 mL, Filter system, PES, 90 mm, sterile	12/case		

Solution Bottles



- Compatible with bottle top filters
- Used as solution storage containers
- Polystyrene bottles are packaged sterile, individually wrapped

Cat. No.	Description	UOM
ES56571	150 mL, Solution bottle, sterile	24/case
ES56573	250 mL, Solution bottle, sterile	24/case
ES56575	500 mL, Solution bottle, sterile	24/case
ES56577	1,000 mL, Solution bottle, sterile	24/case

Square Media Bottle



- Bottle is embossed with two sided graduations
- Three year shelf life from date of manufacture
- All materials used meet stringent FDA requirements
- Temperature range from -60°C to 60°C (-76°F to 140°F)
- Non-autoclavable

Cat. No.	Description	UOM
ES56804-0500	500 mL, Media bottle, PETG, sterile	24/pack, 48/case



PET Media Bottles

- Molded-in graduation scales
- Made of polyethylene (PET)
- Shrink-wrap tray modules
- Non-pyrogenic, non-cytotoxic, non-hemolytic, DNase/RNase and Human DNA free
- Caps made of HDPE
- Sterile

Cat. No.	Description	UOM
ES56801-0125	125 mL, Media bottle, sterile	24/pack, 96/case
ES56801-0250	250 mL, Media bottle, sterile	30/pack, 60/case
ES56801-0500	500 mL, Media bottle, sterile	24/pack, 48/case
ES56801-1000	1,000 mL, Media bottle, sterile	12/pack, 24/case



Sapphire Cell Scraper



- Flexible rotating blade
- Scrape and collect cells easily and effectively
- Easy-tear sterile packing
- Sterilized by E-Beam, DNase/RNase free and non-pyrogenic

Cat. No.	Description	UOM
ES56948	Cell scraper, 220 mm handle, 13 mm blade, sterile	100/pack
ES56949	Cell scraper, 280 mm handle, 20 mm blade, sterile	100/pack



Cell Strainers



- Detach, isolate, and strain cells from clusters and tissues
- Polypropylene frame supports a nylon mesh
- Improved aeration allows air to escape while filtrate is entering the tube, preventing messy spillovers
- Sterile, DNase/RNase, pyrogen, and cytotoxin free

Cat. No.	Description	UOM
ES56953	40 µm Cell strainer, blue, w/ 1 reducing adapter	50/pack
ES56956	70 µm Cell strainer, white, w/ 1 reducing adapter	50/pack
ES56958	100 µm Cell strainer, yellow, w/ 1 reducing adapter	50/pack
ES56959	Reducing adapters for use with 15 mL tubes, sterile	25/pack

Sapphire Syringe Filters

- Available in a variety of membrane types, porosities, and diameters
- Color coded for easy identification
- All syringe filters have luer-lock connections with polypropylene housings
- Filters are molded in the housings, providing a reliable seal without the use of adhesives
- Individually packed in peel-to-open paper/plastic blister packs
- Supplied sterile (gamma irradiated)

PES (Polyethersulfone)

Low affinity for proteins and extractables

- Faster flow rate than PDVF
- Pre-filtration, filtration of buffers, and culture media
- Available in three pore sizes including 0.10 µm for mycoplasma removal

PVDF (Polyvinylidene)

Low protein-binding for filtration of non-aggressive aqueous and mild organic solutions

- Maximizes protein recovery
- High temperature filtration

NYLON

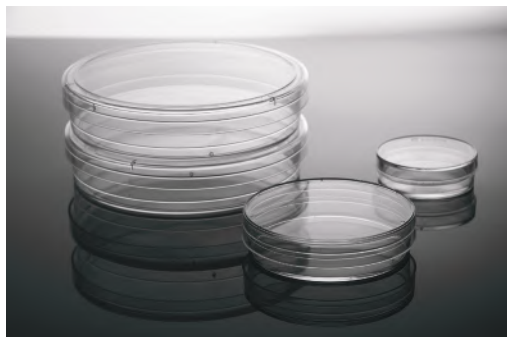
Universal application for analytical procedures

- Chemical filtration
- Beverage filtration



PES				PVDF				Nylon			
Cat. No.	Pore Size	Diameter	UOM	Cat. No.	Pore Size	Diameter	UOM	Cat. No.	Pore Size	Diameter	UOM
-	-	-	-	ES58611	0.10 µm	13 mm	75/pack	-	-	-	-
ES58634	0.22 µm	13 mm	75/pack	ES58614	0.22 µm	13 mm	75/pack	ES58654	0.22 µm	13 mm	75/pack
ES58637	0.45 µm	13 mm	75/pack	ES58617	0.45 µm	13 mm	75/pack	ES58657	0.45 µm	13 mm	75/pack
ES58632	0.10 µm	30 mm	30/pack	ES58612	0.10 µm	30 mm	30/pack	-	-	-	-
ES58635	0.22 µm	30 mm	30/pack	ES58615	0.22 µm	30 mm	30/pack	ES58655	0.22 µm	30 mm	30/pack
ES58638	0.45 µm	30 mm	30/pack	ES58618	0.45 µm	30 mm	30/pack	ES58658	0.45 µm	30 mm	30/pack

Sapphire Cell Culture Dishes



- Made of high clarity polystyrene
- Vacuum plasma TC treated surfaces
- Sterilized by E-Beam, DNase/RNase free and non-pyrogenic
- Flat, transparent surface for distortion-free observation

Cat. No.	Description	UOM
ES56261	Culture dish, 35 x 12 mm	500/case
ES56263	Culture dish, 60 x 15 mm	500/case
ES56265	Culture dish, 100 x 20 mm	5/pack, 300/case
ES56269	Culture dish, 100 x 20 mm	20/pack, 300/case
ES56268	Culture dish, 150 x 25 mm	100/case

Sapphire Cell Culture Towers



Culture Areas:

- 1 chamber (647 cm²)
- 2 chamber (1,279 cm²)
- 5 chamber (3,175 cm²)
- 10 chamber (6,335 cm²)

- Made of high clarity polystyrene
- Vacuum plasma TC treated surface
- Feature wide mouth openings
- Plug and vent caps available
- Sterilized by E-Beam and individually packaged

Cat. No.	Description	UOM
ES56651	1 Chamber, wide mouth	8/case
ES56653	2 Chamber, wide mouth	8/case
ES56655	5 Chamber, wide mouth	4/case
ES56657	10 Chamber, wide mouth	6/case



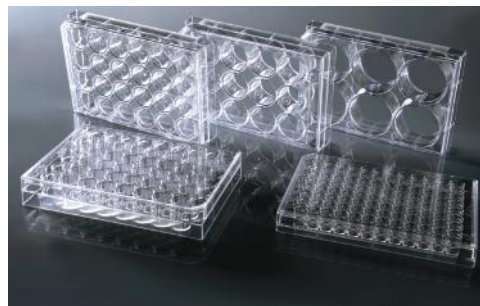
Sapphire Cell Culture Flasks



- Made of high clarity polystyrene
- Vacuum plasma TC treated surface
- Canted neck design for easy access
- Vent cap with 0.22 µm hydrophobic filters
- Flasks are stackable for easy storage
- Sterilized by E-Beam, packaged in resealable bags

Cat. No.	Description	UOM
ES56325	25 cm ² Flask w/vent cap	200/case
ES56329	25 cm ² Non- treated flask w/vent cap	200/case
ES56345	75 cm ² Flask w/vent cap	100/case
ES56349	75 cm ² Non- treated flask w/vent cap	100/case
ES56335	175 cm ² Flask w/vent cap	40/case
ES56339	175 cm ² Non- treated flask w/vent cap	40/case
ES56355	225 cm ² Flask w/vent cap	25/case
ES56359	225 cm ² Non-treated flask w/vent cap	25/case

Sapphire Cell Culture Plates



- Made of high clarity polystyrene
- Thin-wall design to reduce edge effect
- Vacuum plasma TC treated surface
- Specially designed lid ensures low evaporation
- Sterilized by E-Beam and individually wrapped

Cat. No.	Description	UOM
ES56110	Cell culture plate, 6-well	50/case
ES56140	Non-treated cell culture plate, 6-well	50/case
ES56111	Cell culture plate, 12-well	50/case
ES56141	Non-treated cell culture plate, 12-well	50/case
ES56112	Cell culture plate, 24-well	50/case
ES56142	Non-treated cell culture plate, 24-well	50/case
ES56113	Cell culture plate, 48-well	50/case
ES56143	Non-treated cell culture plate, 48-well	50/case
ES56114	Cell culture plate, 96-well	100/case
ES56144	Non-treated cell culture plate, 96-well	100/case



Cell Culture Inserts



- Innovative hanging design facilitates pipetting
- PC membrane: low adsorption rate, reducing the loss of small molecular proteins and other compounds
- PET membrane: excellent transparency, providing better optical clarity for easy observation of cell status
- Compatible with most solvents used for fixing and dyeing
- Each plate is individually wrapped, sterile



PC	PET		
Cat. No.	Cat. No.	Description	UOM
ES56190PC	ES56190PET	6 Permeable cell culture nested inserts, packed in 6-well plate, 0.4 um	10 plates/case
ES56191PC	ES56191PET	6 Permeable cell culture nested inserts, packed in 6-well plate, 3 um	10 plates/case
ES56192PC	ES56192PET	6 Permeable cell culture nested inserts, packed in 6-well plate, 8 um	10 plates/case
ES56193PC	ES56193PET	12 Permeable cell culture nested inserts, packed in 12-well plate, 0.4 um	10 plates/case
ES56194PC	ES56194PET	12 Permeable cell culture nested inserts, packed in 12-well plate, 3 um	10 plates/case
ES56195PC	ES56195PET	12 Permeable cell culture nested inserts, packed in 24-well plate, 0.4 um	10 plates/case
ES56196PC	ES56196PET	12 Permeable cell culture nested inserts, packed in 24-well plate, 3 um	10 plates/case
ES56197PC	ES56197PET	12 Permeable cell culture nested inserts, packed in 24-well plate, 8 um	10 plates/case

Glass Bottom Cell Culture Dishes



- For use with con-focal microscopes, high resolution microscopes, differential interference contrast microscopes, polarized light microscopes, and phase contrast microscopes for cell observation
- Can be used for observation of live cells
- Special bottom design for easy grip
- High optical grade cover glass, cover glass thickness: 0.16-0.19 mm
- Round cover glass insert for good appearance

Cat. No.	Description	UOM
ES56291	35 mm Dish, 15 mm glass bottom, treated, sterile	10/pack, 200/case
ES56292	35 mm Dish, 20 mm glass bottom, treated, sterile	10/pack, 200/case

Glass Bottom Cell Culture Plates



- For use with con-focal microscopes, high resolution microscopes, differential interference contrast microscopes, polarized light microscopes, and phase contrast microscopes for cell observation
- Can be used for observation of live cells
- Special bottom design for easy grip
- High optical grade cover glass, cover glass thickness: 0.16-0.19 mm
- Round cover glass insert for good appearance
- Individually wrapped

Cat. No.	Description	UOM
ES56190	6-well Cell culture plate, 20 mm glass bottom, sterile	10/case
ES56192	24-well Cell culture plate, 10 mm glass bottom, sterile	10/case

Circle Cover Glasses



- Made of pure white borosilicate glass of the first hydrolytic class
- Excellent chemical resistance and flatness
- Absolutely colorless, perfectly clear, suitable for fluorescence microscopy

Cat. No.	Description	UOM
200121	Cover glass, no. 1, circle, 12 mm	1 oz/pack, 10 packs/case
200181	Cover glass, no.1, circle, 18 mm	1 oz/pack, 10 packs/case

Sapphire Black Microplate



- Designed to prevent cross contamination
- Effective gas exchange lid inner design
- Alphanumeric labeling
- Individual packaging in plastic tray
- Non-pyrogenic, non-cytotoxic, human DNA and DNase/RNase free, sterile

Cat. No.	Description	UOM
ES56184B	96-Well black microplate, PS	5/sleeve, 25/case

Culture Chamber Slides

- For microscopic observation of cells
- Alphanumeric markings to aid in sample identification
- Chambers can easily be removed for cell growth directly on the slide
- Culture surface is naturally charged, creating an ideal growth surface for adherent cells



Color	1-Well	2-Well	4-Well	8-Well	UOM
Clear	ES56411	ES56413	ES56415	ES56417	6/pack, 2 packs/case
White	ES56431	ES56433	ES56435	ES56437	6/pack, 2 packs/case
Black	ES56451	ES56453	ES56455	ES56457	6/pack, 2 packs/case

Dimensions:
1-well: 9.40 cm², 2.5 - 5.5 mL
2-well: 4.55 cm², 1.2 - 2.5 mL
4-well: 2.13 cm², 0.5 - 1.3 mL
8-well: 0.98 cm², 0.2 - 0.6 mL

Cryogenic Freezer Vials

Cryogenic freezing vials, with attached blue screw cap made of medical grade polypropylene. Can be repeatedly frozen and thawed.

- Vials have a white writing area
- Externally-threaded with a self-standing bottom
- Gamma radiation sterilized, DNase/RNase free, and non-pyrogenic
- Working temperature: stable from -196°C to 121°C
- Suitable for liquid nitrogen freezing

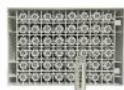
Tube Dimensions [Height x Diameter (with cap, measured from bottom)]:

- ES54247-010 - 35.4±0.1 mm, 11.4±0.1 mm
- ES54247-020 - 48.6±0.1 mm, 11.3±0.1 mm
- ES54247-030 - 61.6±0.1 mm, 11.5±0.1 mm
- ES54247-050 - 83.9±0.1 mm, 11.6±0.2 mm



Cat. No.	Description	UOM
ES54247-010	1 mL Cryogenic freezing vial w/ attached blue screw cap	100 tubes/bag, 20 bags/case
ES54247-020	2 mL Cryogenic freezing vial w/ attached blue screw cap	100 tubes/bag, 20 bags/case
ES54247-030	3 mL Cryogenic freezing vial w/ attached blue screw cap	100 tubes/bag, 20 bags/case
ES54247-050	5 mL Cryogenic freezing vial w/ attached blue screw cap	100 tubes/bag, 20 bags/case

Cryogenic Freezer Vial w/ Barcode



- Attached green screw cap with o-ring seal
- Printed with barcode and QR code
- DNase/RNase free, and non-pyrogenic, sterile

Cat. No.	Description	UOM
ES54249-020	2 mL Cryogenic freezing vial	48/rack, 9 racks/box, 4 boxes/case

Cryogenic Freezer Vial



- Can be repeatedly frozen and thawed
- Self standing
- Attached screw cap with o-ring seal
- DNase/RNase free, and non-pyrogenic, sterile

Cat. No.	Description	UOM
ES54244-020GR-500	2 mL Cryogenic freezing vial	500 tubes/bag

Cryogenic Vials

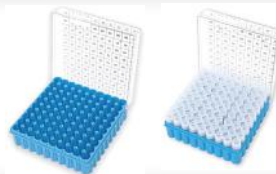
- Interlocking cap design ensures exact fit and will not absorb water or other contamination
- Closure contains silicone gasket to avoid liquid leakage
- Screw cap for one-handed operation
- Sterilized by gamma radiation
- Certified DNase/RNase, pyrogen and DNA free

Cat. No.	Description	UOM
ES54232-020	Cryogenic vial, PP, external threads, graduated	100/cryovial box, 10 boxes/case



Cryogenic Boxes

Cat. No.	Description	UOM
ES54631	Cryo storage box, 81 place (9 x 9)	5/case
ES54632	Cryo storage box, 100 place (10 x 10)	5/case



- Polycarbonate
- Convenient hinged lid
- Includes drainage slots for LN2

Hinged Cardboard Freezer Boxes

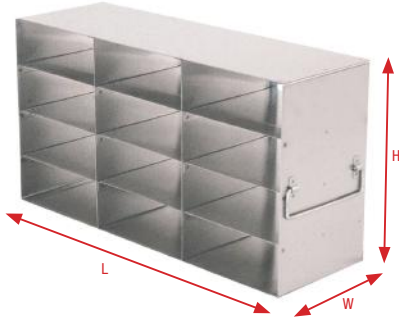


- Attached hinged lids
- Standard size, for existing racks
- Alpha-numeric coding on top, sides, and bottom

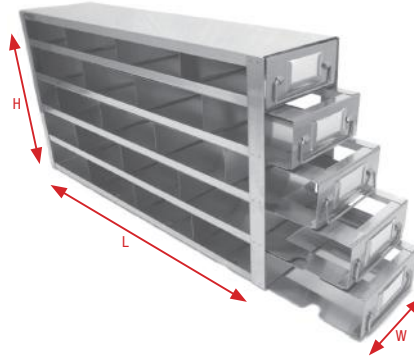
81 Capacity			100 Capacity		
Cat. No.	Color	UOM	Cat. No.	Color	UOM
ES54762-81-AS	Assorted (1 of each color)	5/pack	ES54762-100-AS	Assorted (1 of each color)	5/pack
ES54762-81-B	Blue	5/pack	ES54762-100-B	Blue	5/pack
ES54762-81-G	Green	5/pack	ES54762-100-G	Green	5/pack
ES54762-81-O	Orange	5/pack	ES54762-100-O	Orange	5/pack
ES54762-81-PL	Purple	5/pack	ES54762-100-PL	Purple	5/pack
ES54762-81-R	Red	5/pack	ES54762-100-R	Red	5/pack
ES54762-81-W	White	5/pack	ES54762-100-W	White	5/pack



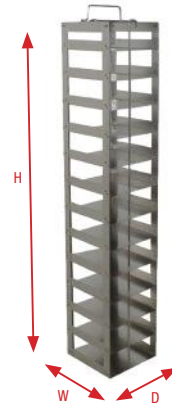
Upright Freezer Racks



Upright Freezer Drawer Racks



Vertical Racks for Chest Freezers/LN2 Tanks



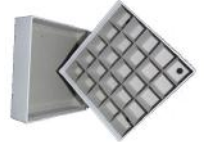
Popular Cryo. Freezer Racks

Cat. No.	Dimensions	Capacity
2" Boxes Upright Freezer Racks		
ES54500	16 ^{5/16} × 6 ^{5/8} × 5 ^{1/2} "	415 × 168 × 140 mm 3 × 3 = 9 boxes
ES54506	16 ^{5/16} × 8 ^{7/8} × 5 ^{1/2} "	415 × 225 × 140 mm 3 × 4 = 12 boxes
ES54503	21 ^{5/8} × 8 ^{7/8} × 5 ^{1/2} "	550 × 225 × 140 mm 4 × 4 = 16 boxes
ES54504	21 ^{5/8} × 11 × 5 ^{1/2} "	550 × 280 × 140 mm 4 × 5 = 20 boxes
ES54505	26 ^{3/4} × 8 ^{7/8} × 5 ^{1/2} "	679 × 225 × 140 mm 5 × 4 = 20 boxes
2" Boxes Upright Freezer Drawer Racks		
ES54500-DR	16 ^{1/2} × 7 ^{1/8} × 5 ^{1/2} "	419 × 181 × 140 mm 3 × 3 = 9 boxes
ES54506-DR	16 ^{1/2} × 9 ^{7/16} × 5 ^{1/2} "	419 × 240 × 140 mm 3 × 4 = 12 boxes
ES54503-DR	22 × 9 ^{7/16} × 5 ^{1/2} "	559 × 240 × 140 mm 4 × 4 = 16 boxes
ES54504-DR	22 × 11 ^{13/16} × 5 ^{1/2} "	559 × 300 × 140 mm 4 × 5 = 20 boxes
ES54505-DR	26 ^{3/4} × 9 ^{7/16} × 5 ^{1/2} "	680 × 240 × 140 mm 5 × 4 = 20 boxes
2" Boxes Vertical Racks for Chest Freezers/LN2 Tanks		
ES54513	22 ^{1/16} × 5 ^{5/8} × 5 ^{1/2} "	560 × 143 × 140 mm 1 × 10 = 10 boxes
ES54515	26 ^{3/8} × 5 ^{5/8} × 5 ^{1/2} "	670 × 143 × 140 mm 1 × 12 = 12 boxes
ES54516	28 ^{9/16} × 5 ^{5/8} × 5 ^{1/2} "	726 × 143 × 140 mm 1 × 13 = 13 boxes
3" Boxes Upright Freezer Racks		
ES54522	21 ^{5/8} × 9 ^{3/8} × 5 ^{1/2} "	550 × 238 × 140 mm 4 × 3 = 12 boxes
15 & 50mL Tubes Upright Freezer Racks		
ES54564-60	16 ^{1/2} × 5 ^{15/16} × 5 ^{1/2} "	419 × 126 × 140 mm 60 tubes (15 mL)
ES54564-120	16 ^{1/2} × 9 ^{15/16} × 5 ^{1/2} "	419 × 252 × 140 mm 120 tubes (15 mL)
ES54565-60	16 ^{1/2} × 9 ^{15/16} × 5 ^{1/2} "	419 × 252 × 140 mm 60 tubes (50 mL)
ES54565-78	22 × 9 ^{15/16} × 5 ^{1/2} "	559 × 252 × 140 mm 78 tubes (50 mL)
15 & 50 mL Tubes Vertical Rack for Chest Freezers & LN2		
ES54572-5	26 ^{1/16} × 6 × 6 ^{1/8} "	637 × 153 × 157 mm 1 × 5 = 5 boxes
96 & 384-Well Microtiter Plates Upright Freezer Racks		
ES54562-70	18 ^{3/8} × 9 ^{13/16} × 5 ^{1/2} "	466 × 233 × 140 mm 70 plates w/lids 80 plates w/o lids
ES54562-80	18 ^{3/8} × 11 × 5 ^{1/2} "	466 × 280 × 140 mm 80 plates w/lids 100 plates w/o lids
100-Cell Hinged Top Plastic Storage Boxes Vertical Freezer Racks		
ES54574-10	23 ^{1/16} × 5 ^{7/8} × 6 ^{1/4} "	586 × 149 × 159 mm 1 × 10 = 10 boxes
ES54574-11	25 ^{3/8} × 5 ^{7/8} × 6 ^{1/4} "	644 × 149 × 159 mm 1 × 11 = 11 boxes

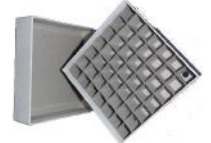
Contact Info@AzerSci.com for more rack styles and sizes.

Cryogenic Storage Boxes

- Cardboard with drain-holes
- Water resistant surface
- **2" Box Dimensions:** 5^{1/4} × 5^{1/4} × 2"
- **3" Box Dimensions:** 5^{1/4} × 5^{1/4} × 3"
- **UOM:** EACH



2" Box	3" Box	
Cat. No.	Cat. No.	Cells
ES54781	ES54782	No divider
ES54781-16	ES54782-16	16-cell divider
ES54781-25	ES54782-25	25-cell divider
ES54781-36	ES54782-36	36-cell divider
ES54781-49	ES54782-49	49-cell divider
ES54781-64	ES54782-64	64-cell divider
ES54781-81	ES54782-81	81-cell divider
ES54781-100	ES54782-100	100-cell divider
ES54781-144	ES54782-144	144-cell divider



Specialty Size Storage Boxes

Cat. No.	Description	Dimensions	Cells
ES54784	2" Mini box	3 × 3 × 2"	No divider
ES54784-25	2" Mini box	3 × 3 × 2"	25-cell divider
ES54785	3" Mini box	3 × 3 × 3"	No divider
ES54785-25	3" Mini box	3 × 3 × 3"	25-cell divider
ES54788	4 ^{3/4} " Box	5 ^{3/4} × 5 ^{3/4} × 4 ^{3/4} "	No divider
ES54788-15	4 ^{3/4} " For 15 mL conical tubes	5 ^{3/4} × 5 ^{3/4} × 4 ^{3/4} "	36-cell divider
ES54788-50	4 ^{3/4} " For 50 mL conical tubes	5 ^{3/4} × 5 ^{3/4} × 4 ^{3/4} "	16-cell divider



See Page 52 for our selection of
Ultra Low Temperature Freezers

Sapphire Advance

Microplates & Capmats

- Manufactured from virgin polypropylene
- Certified RNase/DNase, and pyrogen free
- Automation compatible, with alphanumeric reference
- Ultra-flat surfaces, with raised well design for improved heat sealing and prevention of cross contamination
- Allows for storage down to -80°C
- Plates are transparent and non-sterile
- Corresponding cap mats are made of silicon and non-sterile



Well-Plates

Cat. No.	Description	Bottom	Size	UOM	Cap Mat
ES53442	96-Round well plate	U-bottom	550 µL	10/pack, 10 packs/case	ES53910
ES53461	96-Round well plate	U-bottom	1.2 mL	5/pack, 10 packs/case	ES53910
ES53483	96-Round well plate	U-bottom	1.3 mL	5/pack, 10 packs/case	ES53931
ES53462	96-Round well plate	U-bottom	2 mL	5/pack, 10 packs/case	ES53910
ES53441	96-Round well plate	V-bottom	550 µL	10/pack, 10 packs/case	ES53910
ES53471	96-Square well plate	V-bottom	1 mL	10/pack, 10 packs/case	ES53917
ES53472	96-Square well plate	V-bottom	2 mL	5/pack, 10 packs/case	ES53917
ES53474	24-Square well plate	U-bottom	10 mL	5/pack, 10 packs/case	ES53914
ES53473	48-Square well plate	V-bottom	5 mL	5/pack, 10 packs/case	ES53916
ES53478	384-Square well plate	V-bottom	120 µL	10/pack, 10 packs/case	ES53919
ES53479	384-Square well plate	V-bottom	240 µL	5/pack, 10 packs/case	ES53919

Advance plates comparable to Corning/Axygen® plates - Axxygen® is a registered trademark of Corning Incorporated



See Page 40 for our selection of **Orbital Microplate Shaker**

Capmats

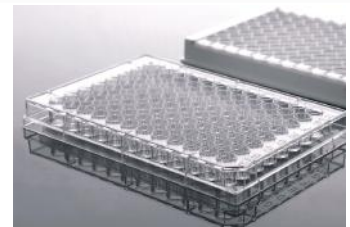
Cat. No.	Description	UOM
ES53910	96-Round well cap mat, pierceable ("-") perforation), alphanumeric grid	10/pack, 5 packs/case
ES53931	96-Round well cap mat, pierceable ("-") perforation), alphanumeric grid	10/pack, 5 packs/case
ES53933	96-Round well cap mat, pierceable ("-") perforation), alphanumeric grid	10/pack, 5 packs/case
ES53917	96-Square well cap mat, pierceable ("-") perforation), alphanumeric grid	10/pack, 5 packs/case
ES53914	24-Square well cap mat, non-perforated, blank	10/pack, 5 packs/case
ES53916	48-Square well cap mat, non-perforated, blank	10/pack, 5 packs/case
ES53919	384-Square well cap mat, non-perforated, alphanumeric grid	10/pack, 5 packs/case



ELISA Plates | Detachable & Undetachable strips

- Made of polystyrene
- Designed for ELISA method
- Conforms to SBS/ANSI
- Flat and transparent bottom
- Excellent well uniformity, CV <5%

Cat. No.	Description	UOM
ES58411-MAX	ELISA microplate, 96-well immunoplate, w/ flat bottom	10/pack, 100/case
ES58413	ELISA plate, high binding, clear	5/pack, 50/case
ES58415	ELISA plate w/ detachable strips (1x8 strips), high binding, clear	5/pack, 50/case



Sapphire Individual PCR Tubes



RNase & DNase
FREE

- Made from polypropylene (PP)
- Thin-wall design helps liquid reach the target temperature quickly
- Reduces the evaporation of the reaction solution
- DNase/RNase, and DNA free
- Autoclavable

Cat. No.	Description	UOM
ES53211	Individual PCR tubes, 0.2 mL, flat caps attached	1,000/pack

Sapphire PCR Strips

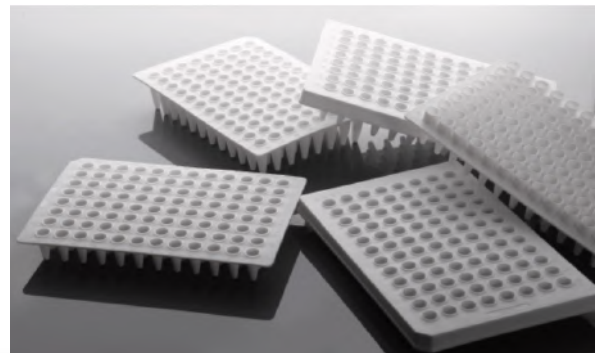
- Reduces the evaporation of the reaction solution
- Increase the real-time PCR fluorescent signal strength
- DNase/RNase, and DNA free, autoclavable

Cat. No.	Description	UOM
ES53221	0.1 mL PCR 8-strip tubes, PP, clear, w/o caps	125/pack
ES53222	0.1 mL PCR 8-strip tubes, PP, white, w/o caps	120/pack
ES53223	0.2 mL PCR 8-strip tubes, PP, clear, w/o caps	125/pack
ES53224	0.2 mL PCR 8-strip tubes, PP, white, w/o caps	120/pack
ES53225	0.2 mL PCR 8-strip tubes, PP, flat cap attached	120/pack
ES53252	0.2 mL PCR 8-strip tubes, PP, flat cap	250/pack
ES53254	0.2 mL PCR 8-strip tubes, PP, domed caps	250/pack
ES53231	Flat caps, PP, for 8-tube PCR strip	250/pack
ES53233	Domed caps, PP, for 8-tube PCR strip	250/pack
ES4305	Domed caps, PP, for 12-tube PCR strip	125/pack
ES4304	0.2 mL PCR 12-strip tube, PP, w/o caps	125/pack

Sapphire PCR Well Plates

- High quality polypropylene material to guarantee low protein absorption and the loss of liquid
- Specially designed for rapid thermal transfer
- White plates are ideal for qPCR
- Certified free of DNase/RNase, pyrogen, and human DNA

RNase | DNase | Pyrogen
FREE



Cat. No.	Wells	Volume	Skirt	Color	Notch Position	UOM
ES53401	96-well	0.2 mL	Non-skirted	Clear	H12	25/pack
ES53403	96-well	0.1 mL	Semi-skirted	Clear	A1	25/pack
ES53404	96-well	0.2 mL	Semi-skirted	Clear	A12	25/pack
ES53405	96-well	0.2 mL	Skirted	Clear	H1	25/pack
ES53408	384-well	0.03 mL	Skirted	Clear	A24, P24	50/pack
ES53432W	96-well	0.1 mL	Skirted	White	-	50/pack
ES53433	96-well	0.1 mL	Semi-skirted	Clear	-	50/pack

PCR Sealing Mat with Septa

- 96-well sealing mat for round well plate
- Ideal for automation and compatible with the ABI 3100
- Scored, non-sterile



Cat. No.	Description	UOM
ES53939	96-Round well sealing mat with septa	10/pack, 5 packs/case

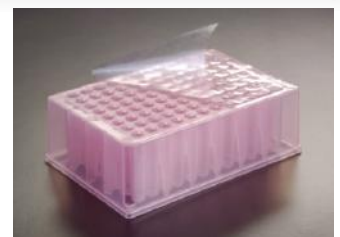
Sapphire Sealing Films & Foils

Films

- Perforated end tabs and a multiple split backing for accurate positioning and secure seal
- Less than .001% moisture permeable under high humidity conditions and less than .01% oxygen permeable
- DMSO resistant

Foils

- Ideal for manual sealing during PCR work and also for high throughput applications
- Adhesive backing makes it easy to apply
- Pierceable with a pipet tip for easy access to sample
- DMSO resistant and no heat sealer needed



Cat. No.	Description	Temp. Range	UOM
ES53953	PCR sealing aluminum foil	Adhesive Pierceable Non-sterile	-80°C to +120°C 100/pack
ES53957	Sealing film	Adhesive Transparent Non-sterile	-40°C to +120°C 100/pack
ES53957-S	Sealing film	Adhesive Transparent Sterile	-40°C to +120°C 100/pack
ES53955	PCR sealing film	Thermal Transparent Non-sterile	-70°C to +100°C 100/pack
ES53955-S	PCR sealing film	Thermal Transparent Sterile	-70°C to +100°C 100/pack

qMAX™ Gold, qPCR Mix

- Ready to use 2X Master Mix
- Reduce pipetting errors with inert yellow dye
- Stable at room temperature for up to 30 days
- Compatible with fast cycling protocols
- Highly sensitive for low copy number templates

Cat. No.	Description	Reaction Units
ES53871-100	qMAX™ Gold, no ROX qPCR mix	100
ES53871-500	qMAX™ Gold, no ROX qPCR mix	500
ES53871-1000	qMAX™ Gold, no ROX qPCR mix	1,000
ES53873-100	qMAX™ Gold, low ROX qPCR mix	100
ES53873-500	qMAX™ Gold, low ROX qPCR mix	500
ES53873-1000	qMAX™ Gold, low ROX qPCR mix	1,000
ES53875-100	qMAX™ Gold, high ROX qPCR mix	100
ES53875-500	qMAX™ Gold, high ROX qPCR mix	500
ES53875-1000	qMAX™ Gold, high ROX qPCR mix	1,000

qMAX™ Green qPCR Mix

- Superior sensitivity and fast cycling with exceptional results
- Includes Hot Start Taq Polymerase for greater specificity & accuracy
- Ideal for low copy number templates
- Early C_t values and detection across a broad dynamic range

Cat. No.	Description	Reaction Units
ES53813-100	qMAX™ Green, low ROX qPCR mix	100
ES53813-500	qMAX™ Green, low ROX qPCR mix	500
ES53813-1000	qMAX™ Green, low ROX qPCR mix	1,000
ES53815-100	qMAX™ Green, high ROX qPCR mix	100
ES53815-500	qMAX™ Green, high ROX qPCR mix	500
ES53815-1000	qMAX™ Green, high ROX qPCR mix	1,000

Taq DNA Polymerase and Master Mix

- Ideal for routine PCR applications as well as genotyping, colony PCR, and fast PCR
- Improved template affinity and increased processivity for higher enzymatic activity and greater yields
- Buffer optimized for a variety of assay conditions

Cat. No.	Description	Reaction Units
ES53711-500	Taq DNA Polymerase	500
ES53711-1000	Taq DNA Polymerase	1,000
ES53711-6000	Taq DNA Polymerase	6,000
ES53713-200	2X Taq Master Mix	200
ES53713-1000	2XTaq Master Mix	1,000
ES53715-200	2X Taq Red Master Mix	200
ES53715-1000	2X Taq Red Master Mix	1,000

qMAX™ Green One Step Kit

- Generate qPCR to cDNA to qPCR, in one tube
- High quality formulation for enhanced stability and performance
- Hot-Start Taq allows for preparation at room temperature
- Ready to use 2X qPCR master mix and 20X reverse transcript
- Blue dye allows for pipetting and visualization in plates
- Available for green fluorescence or probe detection
- Optimized for use across multiple target amplification

Cat. No.	Description	Reaction Units
ES53883-100	qMAX™ Green One Step Kit, low ROX	100
ES53885-100	qMAX™ Green One Step Kit, high ROX	100

Taq Plus DNA Polymerase & Master Mix

- Higher fidelity for long PCR amplicons, up to 35kb
- Ideal for problematic templates
- Better sensitivity and higher activity for low copy and long PCR
- Enzyme of choice for TA cloning

Cat. No.	Description	Reaction Units
ES53751-250	Taq Plus DNA Polymerase	250
ES53751-500	Taq Plus DNA Polymerase	500
ES53753-200	2X Taq Plus Master Mix	200
ES53753-1000	2X Taq Plus Master Mix	1,000

qMAX™ cDNA Synthesis Kit

- Rapidly generate high quality, qPCR ready cDNA
- Unbiased, complete sequence representation
- Thermostable qMAX™ RT with RNase inhibitor
- Optimized for use across a wide dynamic range
- Two tube format for easy reaction set up

Cat. No.	Description	Reaction Units
ES53851-25	qMAX™ cDNA Synthesis Kit	25
ES53851-100	qMAX™ cDNA Synthesis Kit	100
ES53851-250	qMAX™ cDNA Synthesis Kit	250

1 Hour Mammalian Genotyping Kit

- DNA extraction and amplification in an hour
- Proprietary lysis buffer optimized for ear punches, tail snips and other mammalian tissues
- Single tube - no organic solvents or clean up procedures
- Enhanced Hot Start Taq Polymerase Master Mix included

Cat. No.	Description	Reaction Units
ES53793-80	1 Hour Mammalian Genotyping Kit	80
ES53793-400	1 Hour Mammalian Genotyping Kit	400

High Fidelity DNA Polymerase

- 50X higher fidelity than Taq DNA polymerase
- Works with crude DNA samples
- Ideal for cloning, mutagenesis and microarrays
- Optimized buffer system with unique PCR enhancers

Cat. No.	Description	Reaction Units
ES53791-200	High Fidelity DNA Polymerase	200
ES53791-1000	High Fidelity DNA Polymerase	1,000

qMAX™ Probe One Step Multiplex Kit

- High quality formulation for enhanced stability and performance
- Blue dye allows for pipetting and visualization in plates
- Optimized for use across multiple target amplification

Cat. No.	Description	Reaction Units
ES53891-100	qMAX™ Probe One Step Multiplex Kit, low ROX	100

qMAX™ Probe One Step Kit

- Generate qPCR to cDNA to qPCR, in one tube
- Ready to use 2X qPCR master mix and 20X reverse transcript
- Available for green fluorescence or probe detection

Cat. No.	Description	Reaction Units
ES53893-100	qMAX™ Probe One Step Kit, low ROX	100
ES53895-100	qMAX™ Probe One Step Kit, high ROX	100

qMAX™ Probe qPCR Mix

- Same high efficiency for multiplex and singleplex reactions
- Compatible with popular hydrolysis and beacon probes

Cat. No.	Description	Reaction Units
ES53831-100	qMAX™ Probe, no ROX qPCR Mix	100
ES53831-500	qMAX™ Probe, no ROX qPCR Mix	500
ES53831-1000	qMAX™ Probe, no ROX qPCR Mix	1,000
ES53833-100	qMAX™ Probe, low ROX qPCR Mix	100
ES53833-500	qMAX™ Probe, low ROX qPCR Mix	500
ES53833-1000	qMAX™ Probe, low ROX qPCR Mix	1,000
ES53835-100	qMAX™ Probe, high ROX qPCR Mix	100
ES53835-500	qMAX™ Probe, high ROX qPCR Mix	500
ES53835-1000	qMAX™ Probe, high ROX qPCR Mix	1,000

Hot Start Taq DNA Polymerase & Master Mix

- Exceptional sensitivity for low copy PCR
- Ideal for multiplex PCR and amplification of GC-rich DNA

Cat. No.	Description	Reaction Units
ES53731-500	Hot Start Taq DNA Polymerase	500
ES53731-1000	Hot Start Taq DNA Polymerase	1,000
ES53731-6000	Hot Start Taq DNA Polymerase	6,000
ES53733-200	Hot Start 2X Taq Master Mix	200
ES53733-1000	Hot Start 2X Taq Master Mix	1,000
ES53735-200	Hot Start 2X Taq Red Master Mix	200
ES53735-1000	Hot Start 2X Taq Red Master Mix	1,000

qMAX™ Green qPCR Mix with Blue Tracking Dye

Supplied as a ready-to-use 2X master mix, qMax Green has been engineered for high sensitivity, fast cycling and excellent reproducibility.

- Superior sensitivity and fast cycling with exceptional results
- Ideal for low copy number templates
- Early Ct values and detection across a broad dynamic range
- Ready to use 2x mastermix
- Includes Hot Start Taq Polymerase for greater specificity and accuracy
- Inert, blue tracking dye assists with accurate pipetting

Cat. No.	Description	Reaction Units
ES53822-100	qMAX™ Green qPCR Mix w/ blue tracking dye, no ROX	100
ES53824-100	qMAX™ Green qPCR Mix w/ blue tracking dye, low ROX	100
ES53826-100	qMAX™ Green qPCR Mix w/ blue tracking dye, high ROX	100



Mag-Bind® TotalPure NGS

Mag-Bind® TotalPure NGS offers an easy-to-use, reliable solution for the purification of both DNA and RNA for next-generation sequencing workflows with high recovery rates. Mag-Bind® TotalPure NGS is capable of selectively binding fragments depending on the reagent-to-sample ratio used, giving the user flexibility to perform left, right or double-sided size selection. This product is designed for both manual and fully automated purification of DNA and RNA samples, as well as for the purification of PCR products.

Cat. No.			Description
5 mL	50 mL	500 mL	
ES52374-5ML	ES52374-50ML	ES52374-500ML	Mag-Bind® TotalPure NGS

E.Z.N.A.® HP Total RNA Kit

The E.Z.N.A.® HP Total RNA Isolation Kit provides a rapid and easy method for RNA isolation from cultured cells or tissues. The kit includes RNA Homogenizer columns that integrate sample homogenization and genomic DNA elimination into one single step. This convenient spin-column format requires no phenol or chloroform and avoids time-consuming steps. RNA purified using the E.Z.N.A.® HP Total RNA method is ready for applications such as RT-PCR, RT-qPCR, Northern blotting, next-generation sequencing, poly A+ RNA (mRNA) purification, nuclease protection, and in vitro translation.

Cat. No.			Description
5 Preps	50 Preps	200 Preps	
ES52343-5	ES52343-50	ES52343-200	E.Z.N.A.® HP Total RNA Kit

E.Z.N.A.[®] FastFilter Plasmid DNA Mini Kit

The E.Z.N.A.[®] FastFilter Plasmid DNA Mini Kit is designed for rapid purification of high-quality plasmid DNA, starting with bacterial pellet from up to 5 mL of culture, following the alkaline-lysis method in just 9 minutes. The kit features an innovative and first of its kind FastFilter mini column nested within a regular HiBind[®] silica mini spin column to combine lysate clearance and DNA binding into one simple centrifugation step. Following wash and elute steps, purified plasmid DNA is immediately ready for a wide variety of downstream applications such as routine screening, restriction enzyme digestion, transformation, PCR, and DNA sequencing.

- Rapid, 9 minute processing time from a bacterial pellet
- Unique lysate clearance and DNA binding in 1 step
- Convenient lysate clearance column eliminates cellular debris pelleting and transfer step
- Versatile, process up to 5 mL bacterial cultures with different plasmid types and culture medias



Faster processing without sacrificing yield and quality

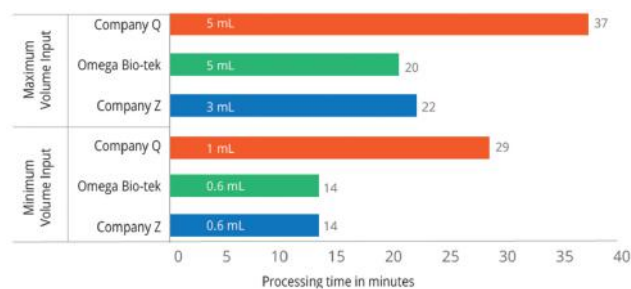


Figure 1. Comparison of Plasmid Purification times (n = 4) using kits from Omega Bio-tek or Company Z or Company Q. The processing time was comparable using kits from Omega Bio-tek and Company Z at minimum culture volume and was lower by 2 min for Omega Bio-tek at maximum volume. The processing times shown are actual timed extractions including all pipetting, centrifugation, and bacterial culture pelleting steps. Omega Bio-tek outperformed Company Q with respect to processing time at both the culture volumes tested.

Cat. No.

10 Preps	100 Preps	300 Preps	Description
ES52393-10	ES52393-100	ES52393-300	E.Z.N.A. [®] FastFilter Plasmid DNA Mini Kit

E.Z.N.A.[®] Plasmid Mini Kit I

The E.Z.N.A.[®] Plasmid DNA Mini Kit I is designed to isolate up to 25 µg of high-quality plasmid DNA from 1-5 mL bacterial cultures in less than 30 minutes. Plasmid DNA purification follows the alkaline-lysis method and is simplified with HiBind[®] Mini Column technology into three quick steps: Bind, Wash, and Elute. Purified plasmid DNA is immediately ready for a wide variety of downstream applications such as routine screening, restriction enzyme digestion, transformation, PCR, and DNA sequencing.

The E.Z.N.A.[®] Plasmid DNA Mini Kit is available in two formats – Q-spin (ES52387) and V-spin (ES52388). Q-spin features columns that are capless whereas V-spin includes columns that have a cap attached. The columns are otherwise identical in use and application and can be used in both vacuum or centrifugation protocols.

- Rapid – purification of plasmid DNA in less than 30 minutes
- Safe – no phenol/chloroform extractions
- Versatile – spin and vacuum formats available
- High-quality – DNA is suitable for a variety of downstream applications



Q-Spin

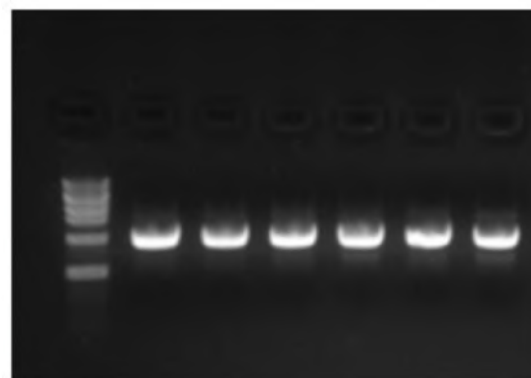


V-Spin

Cat. No.

5 Preps	50 Preps	200 Preps	Description
ES52387-5	ES52387-50	ES52387-200	E.Z.N.A. [®] Plasmid Mini Kit I, Q-Spin
ES52388-5	ES52388-50	ES52388-200	E.Z.N.A. [®] Plasmid Mini Kit I, V-Spin

Super-coiled DNA



5 µL of purified pGEM plasmid was analyzed on a 1% Agarose gel. Plasmid was isolated from 1 mL DH5α cultures harboring the plasmid using Omega Bio-tek's E.Z.N.A.[®] Plasmid DNA Mini Kit I.



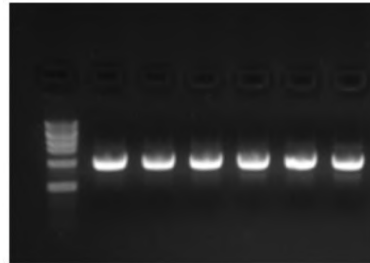
E.Z.N.A.® Tissue DNA Kit

The E.Z.N.A.® Tissue DNA Kit offers a versatile and cost-effective method for the isolation of DNA from a wide variety of samples including fresh or frozen animal cultured cells and tissues, buccal swabs, whole blood, mouse tail snips, etc. The DNA purification process is simplified with HiBind® Mini Column technology into four quick “lyse-bind-wash-elute” steps and can be accomplished in less than 20 minutes post-lysis. This convenient spin-column format avoids time-consuming steps like alcohol precipitation, use of toxic compounds such as phenol and chloroform and allows for multiple samples to be processed in parallel. DNA purified using this kit is ready for most downstream applications such as PCR, sequencing, genotyping, southern blot analysis, and restriction enzyme digestion.

- Rapid - DNA isolation in less than 20 minutes post-lysis
- Versatile - single kit for multiple sample types
- Specialized buffer system - optimized buffers for higher yields
- Safe - no phenol/chloroform extractions
- High-quality - DNA is suitable for a variety of downstream applications

Cat. No.			
5 Preps	50 Preps	200 Preps	Description
ES52312-5	ES52312-50	ES52312-200	E.Z.N.A.® Tissue DNA Kit

Intact, high-molecular weight DNA as analyzed on an Agarose Gel



Genomic DNA was extracted from 30 mg mouse liver using the E.Z.N.A. Tissue DNA Kit Protocol for Tissue samples and eluted in 100 µL volume. 5 µL eluate was analyzed on a 1% Agarose gel.

E.Z.N.A.® Gel Extraction Kit

The E.Z.N.A.® Gel Extraction kit uses the proprietary HiBind® spin-column technology to purify DNA fragments ranging from 100 bp to 10 kb from all grades of agarose gels with high recovery (> 90%). The kit uses a specialized binding buffer system that not only dissolves the gel slice and binds to the spin column but also includes a pH indicator for a visual representation of optimal pH for DNA binding. The bind step is followed by three rapid wash steps and DNA is eluted with deionized water or elution buffer. Purified DNA is ready for a variety of downstream applications such as ligations, PCR amplification, restriction enzyme digestion, cloning, and various labeling reactions.

Cat. No.			
5 Preps	50 Preps	200 Preps	Description
ES52370-5	ES52370-50	ES52370-200	E.Z.N.A.® Gel Extraction Kit

E.Z.N.A.® Cycle Pure Kit

The E.Z.N.A.® Cycle-Pure Kit is designed for the rapid purification of single or double-stranded DNA from PCR and other enzymatic reactions. The system follows a “bind-wash-elute” procedure and completely removes primers, nucleotides enzymes, salts, and other impurities from a DNA sample. This convenient spin-column format eliminates the need for expensive resins or toxic organic compounds such as phenol and chloroform, thereby making it possible to process multiple samples in parallel. Purified DNA can be used in T-A ligations, sequencing, restriction enzyme digestion, and various other labeling reactions.

Cat. No.			
5 Preps	50 Preps	200 Preps	Description
ES52373-5	ES52373-50	ES52373-200	E.Z.N.A.® Cycle Pure Kit

E.Z.N.A.® Plant DNA DS Kit

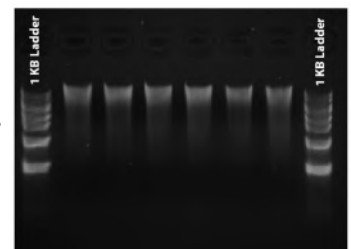
The E.Z.N.A.® Plant DNA DS Mini Kit is designed for efficient recovery of genomic DNA up to 30 kb in size from fresh, frozen, or dried plant tissue samples rich in polysaccharides, polyphenols or having a lower DNA content. Up to 50 mg wet tissue can be processed in less than 1 hour. The system combines the reversible nucleic acid-binding properties of the HiBind® matrix with the speed and versatility of spin column technology to eliminate polysaccharides, phenolic compounds, and enzyme inhibitors from plant tissue lysates. Purified DNA is suitable for PCR, restriction digestion, and hybridization applications.

This procedure relies on the well-established properties of the cationic detergent, cetyltrimethyl ammonium bromide (CTAB), in conjunction with the unique binding system to increase yields and provide high-quality DNA. The system eliminates the need for chloroform extractions traditionally associated with CTAB based lysis methods. Samples are homogenized and lysed in a high salt buffer containing CTAB and binding conditions are adjusted and DNA is purified using a HiBind® DNA Mini Columns. Salts, proteins, and other contaminants are removed to yield high-quality genomic DNA suitable for downstream applications such as endonuclease digestion, thermal cycle amplification, and hybridization applications.

- Rapid - homogenizer columns allow for faster processing
- Versatile - reliable results from a variety of sample types
- Safe - no organic extractions
- High-quality - purified DNA suitable for most applications

Cat. No.		
5 Preps	50 Preps	Description
ES52322-5	ES52322-50	E.Z.N.A.® Plant DNA DS Kit

High molecular weight genomic DNA



Genomic DNA was purified from 50 mg potato leaf with the E.Z.N.A. Plant DNA DS Kit. 5 µL eluate DNA was analyzed on a 1% Agarose gel.

MyGel InstaView™ Complete Electrophoresis System

- Compact all-in-one DNA gel viewing system
- Ideal for laboratories doing CRISPR, genotyping and multiplex gel runs
- Combines horizontal DNA gel box with blue LED light source and integrated amber filter
- View DNA migration and separation as it happens
- Specially designed integrated amber filter will not fog up from condensation
- Blue light illumination, won't damage DNA
- Capture high resolution images without removing the gel from the tank



Cat. No.	Description	UOM
ES59740	MyGel InstaView™ complete electrophoresis system with blue LED illuminator	Each

QuickSilver™ Buffer Powder

- Premeasured pouches make 1 liter of 1X buffer solution
- Just empty pouch into water and stir - no diluting of stock solutions
- No pH adjustment necessary
- Quality and consistency guaranteed
- Nuclease and protease free
- Long shelf life



Cat. No.	Description	UOM
ES51140	QuickSilver™ TAE buffer powder	100/pack
ES51143	QuickSilver™ Tris-Glycine buffer powder	50/pack
ES51144	QuickSilver™ Tris-MES-SDS buffer powder	50/pack
ES51145	QuickSilver™ Tris-MOPS-SDS buffer powder	50/pack
ES51146	QuickSilver™ PBS buffer powder	100/pack
ES51147	QuickSilver™ PBS-T buffer powder	100/pack
ES51148	QuickSilver™ TBS buffer powder	100/pack
ES51149	QuickSilver™ TBS-T buffer powder	100/pack



MyGel™ Mini Electrophoresis System

- Complete system includes gel tank, power supply, and two casting sets
- Casting sets include stands, trays, and double-sided combs
- Gel box connects directly to power supply, with 3 preset voltages to pick from (35V, 50V, 100V), and a 99 minute timer
- Casting is quick and easy; just place the tray in the casting stand and pour
- Clear lid is vented to release heat generated during electrophoresis



Cat. No.	Description	UOM
ES51300	MyGel™ mini electrophoresis system	Each

Agarose

- High-purity, free from organic solvents
- Enhanced resolution and clarity
- Low EEO and increased electrophoretic mobility
- RNase/DNase, and protease free

Cat. No.	Description	UOM
ES48801	Agarose, 25 grams	Each
ES48804	Agarose, 100 grams	Each
ES48807	Agarose, 500 grams	Each





Agarose Tablets, 0.5 g

- Eliminates the need to weigh agarose
- Dissolve quickly, within 2 minutes
- Low EEO, standard molecular biology grade
- Consistent reproducible gels
- Free from organic solvents

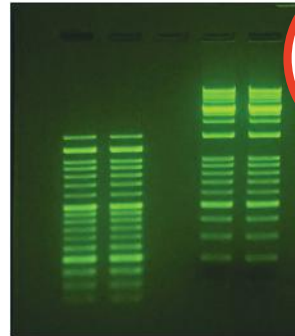


Cat. No.	Description	UOM
ES48800	Agarose tablets, 0.5 grams	200/pack
ES48802	Agarose tablets, 0.5 grams	1000/pack

SmartGlow™ Nucleic Acid Stain



- Replaces hazardous ethidium bromide (EtBr)
- Better sensitivity than EtBr (down to 0.1ng)
- Excitation of both UV and blue light
- Ships at ambient temperature (store at 4°C)
- Compatible with SmartBlue™ transilluminator



Markers dyed with SmartGlow™ loading dye

Cat. No.	Description	UOM
ES51772	SmartGlow™ pre stain (20,000X), 1 mL	Each
ES51774	SmartGlow™ loading dye (6X), 1 mL	Each

Western Blot Boxes

- Made of polystyrene
- Easy-open hinged lid minimizes evaporation
- The uniformly flat bottom and 90° corners helps to reduce antibody and reagent usage



Cat. No.	Description	UOM
ES51730	2 ^{7/8} x 1 ^{3/16} x 3/4 in, clear	5/pack
ES51731	2 ^{7/8} x 2 x 1 ^{1/4} in, clear	5/pack
ES51732	3 ^{1/2} x 2 ^{9/16} x 1 in, clear	5/pack
ES51732BK	3 ^{1/2} x 2 ^{9/16} x 1 in, black	5/pack
ES51733	3 ^{3/4} x 1 ^{3/16} x 5/8 in, clear	5/pack
ES51734	4 ^{3/8} x 2 ^{1/16} x 1 ^{7/8} in, clear	5/pack
ES51735	4 ^{5/8} x 3 ^{1/2} x 1 ^{1/8} in, clear	5/pack
ES51736	4 ^{9/16} x 4 ^{9/16} x 1 ^{1/4} in, clear	5/pack
ES51736BK	4 ^{9/16} x 4 ^{9/16} x 1 ^{1/4} in, black	5/pack
ES51737	6 x 4 x 1 ^{1/4} in, clear	5/pack
ES51738	6 x 4 x 2 in, clear	5/pack

SmartCheck™ Protein Markers

- Ready to use, just load and run
- Available in blue or tri-color format
- Covers a broad range from 5 - 245 kDa*
- Enhanced bands provide quick reference points
- 500 µL suitable for 100 lanes (5 µL per lane)



Cat. No.	Description	UOM
ES51751	SmartCheck™ blue protein marker, 10 bands, 9-180 kDa, 250 µL	2 vials/pack
ES51752	SmartCheck™ blue protein marker, 11 bands, 9-180 kDa, 250 µL	2 vials/pack
ES51754	SmartCheck™ tri-color protein marker, 10 bands, 9-180 kDa, 250 µL	2 vials/pack
ES51756	SmartCheck™ tri-color extended range protein marker, 12 bands, 9-245 kDa, 250 µL	2 vials/pack
ES51758	SmartCheck™ tri-color extended range plus protein marker, 13 bands, 9-245 kDa, 250 µL	2 vials/pack

SmartDoc™ Gel Imaging System



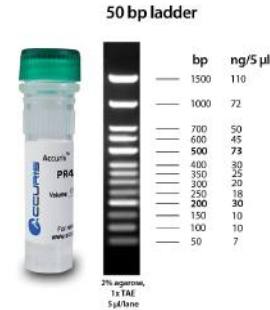
Uses your smart phone or tablet and share easily!



- Economical alternative to traditional gel imaging systems, for quality images of gels for records and analysis
- For use with UV or blue light transilluminators
- Just lay smart phone/tablet on non-slip rubber pad and align the camera lens over the filter
- Platform can be raised and lowered to adjust the focus and image size

Cat. No.	Description	UOM
ES59700	SmartDoc™ gel imaging system	Each
ES59701	SmartDoc™ gel imaging system, w/ blue light illumination	Each
ES59703	UV blocking mat	Each
ES59706	535 nm Band pass filter cassette for SmartDoc™	Each
ES59707	590 nm Band pass filter cassette for SmartDoc™	Each

SmartCheck DNA Ladders



- Ready-to-use formulation includes loading buffer and tracking dye
- 500 µL suitable for 100 lanes (5 µL per lane)
- Higher intensity reference bands
- Ultra pure production allows economical ambient shipping

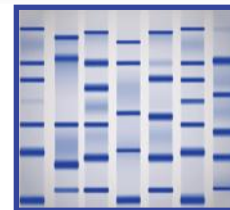
Cat. No.	Description	UOM
ES51761-100	50 bp DNA ladder, 500 µL / 100 lanes	Each
ES51761-500	50 bp DNA ladder, 5 x 500 µL / 500 lanes	Each
ES51763-100	100 bp DNA ladder, 500 µL / 100 lanes	Each
ES51763-500	100 bp DNA ladder, 5 x 500 µL / 500 lanes	Each
ES51765-100	1 kb DNA ladder, 500 µL / 100 lanes	Each
ES51765-500	1 kb DNA ladder, 5 x 500 µL / 500 lanes	Each

Coomassie Brilliant Blue Protein Stain

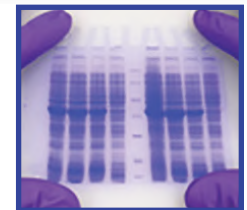


G-250 Protein Stain

- Ready to use solution
- Fast protein staining - in about 60-90 minutes
- Detects up to 8 ng protein per band
- Protein bands appear and visible while the gel in stain
- Compatible with fixing by alcohol
- Mass spec compatible



G-250 Protein Stain



R-250 Protein Stain

Cat. No.	Description	UOM
ES51776	G-250 Protein stain, 1 liter	Each
ES51777	G-250 Protein stain, 1 gallon	Each
ES51778	R-250 Protein stain, 1 liter	Each
ES51779	R-250 Protein stain, 1 gallon	Each



R-250 Protein Stain

- Easy detection - develops intensely colored complexes with proteins
- High sensitivity - can determine as little as 0.5 µg/cm² of protein present in a gel matrix
- Reversible staining anion of Coomassie Brilliant Blue formed in the acidic staining medium combines with the protonated amino groups of proteins by electrostatic interaction; resulting complex is reversible under the proper conditions
- Differentiation between bound and unbound dye - when dissolved in 0.01M citrate buffer at pH 3.0, has an absorption maximum at 555 nm; protein-dye complex is characterized by a peak slightly broader than that of the free dye with a maximum at 549 nm

DEPC Treated Water



- Contains DEPC 0.1 mL/L
- Molecular grade water, sterile
- DNase/RNase, and pyrogen free

Cat. No.	Size	UOM
ES58180-1	250 mL	Each
ES58180-2	500 mL	Each
ES58180-3	1 Liter	Each

Endotoxin Free Water



Endotoxin free water, endotoxin level tested <0.0050 EU/mL

Molecular formula: H₂O
Molecular weight: 18.02

Cat. No.	Size	UOM
ES58181-2	500 mL	Each
ES58181-3	1 Liter	Each



Pristine[®] HPLC & LC-MS Grade Reagents



Actual lot analysis
printed on every label

HPLC Reagents

- ACS certified
- Low UV absorbency, high GC assay
- Low water content and residue after evaporation
- Packaged with nitrogen & sub-micron filtered

LC-MS Reagents

- No LC-MS TIC signals higher than 100ppb reserpine
- No LC-MS TIC signals higher than 50ppb reserpine (ESI + mode)
- 50ppb 4-nitrophenol (ESI - mode)
- Very low metal concentration (<100ppb)
- Low particles

Description	HPLC	LC-MS	UOM
	Cat. No.	Cat. No.	
Acetonitrile	1910-5	1930-5	4 Liter, 4/case
Methanol	1915-5	1935-5	4 Liter, 4/case
Water	1919-5	1939-5	4 Liter, 4/case
Isopropyl alcohol	1914-5	-	4 Liter, 4/case
Dichloromethane	1913-5	-	4 Liter, 4/case
N-Hexane 95%	1916-5	-	4 Liter, 4/case
Tetrahydrofuran with BHT	1917-5	-	4 Liter, 4/case

Autosampler Vials and Glass Inserts

- Glass vial with write on patch
- Made from type 1 borosilicate glass
- Amber vials are for samples that are sensitive to light



Cat. No.	Description	UOM
ES10700	2 mL, Clear, combo pack with 9 mm blue screw caps without slit, septa	100/pack
ES10701	2 mL, Clear, combo pack with 9 mm blue screw caps with slit, septa	100/pack
ES10700AM	2 mL, Amber, combo pack with 9 mm blue screw caps without slit, septa	100/pack
ES10701AM	2 mL, Amber, combo pack with 9 mm blue screw caps with slit, septa	100/pack
ES10751	250 µL Glass insert with bottom spring	100/pack
ES10753	350 µL Glass insert with flat bottom	100/pack

Scintillation Vials and Caps

- Manufactured from 1st class hydrolytic glass



Cat. No.	Capacity	Dimensions (D x H)	Type	UOM
ES10760	10 mL	22.5 x 46 mm	Screw neck vials	100/pack
ES10767-CMB	40 mL	27.5 x 95 mm	Pre-sealed vial-closure combination	100/pack
ES10732-N18BL	-	-	Screw caps (bonded)	100/pack

Primo

CASSETTE PRINTER



Azer Scientific's Primo™ tissue cassette laser printer is a must-have for pathology and lab environments. Precision construction forges jam-free printing while its low work noise ≤ 65 dB design offers ribbon or cartridge-free printing, optimal for cost-efficient workflows.

- Laser tissue cassettes printer (ribbon or cartridge free printing)
- 6 cassette magazines hold up to 480 pcs total, load 6 different color cassettes for efficient workflow
- Precision construction for jam-free cassette printing
- 1D and 2D barcodes, alphanumeric, graphic and logo printing
- Low work noise ≤ 65 dB, meet the hospital pathology and labs environment requirement
- Integrate to LIS/HIS System
- Perfectly compatible with our hinged tissue cassettes
- On-demand mode printing, high printing speed up-to 3 cassettes a second

Cat. No.	Description	UOM
ES39915	Primo™ cassette printer	Each

Primo

BP CASSETTE PRINTER



- Ultraviolet laser printing (ribbon or cartridges free), no extra consumable materials
- Patented-designed software system enables high-resolution and high-content 1D and 2D barcodes, alphanumeric, graphic, and logo printing, can be integrated into HIS and LIS environment
- 500 DPI high-resolution printing, print is permanent and resistant to chemical degradation
- Precision construction for jam-free cassette printing
- Patented-designed cassettes per-load and load system for easy print reading and access
- Low work noise ≤ 65 dB, meet the hospital pathology and labs environment requirement
- 6 hoppers allows for multiple cassette colors for efficient workflow
- On-demand or batch mode printing, high printing speed up to 20 cassettes per minute
- Can install scanner for instant scanning

Cat. No.	Description	UOM
ES39915-BP	Primo™ batch cassette printer	Each

Cassettes



ES6015

ES6016



ES6014

ES6047

ES6048

Color	Slimsette - lids hinged at front				Hinged, separate lids		
	Mesh	Tissue	Biopsy	UOM	Tissue	Biopsy	UOM
Aqua	ES6014-A	ES6015-A	ES6016-A	2000/case	ES6047-A	ES6048-A	2000/case
Blue	ES6014-B	ES6015-B	ES6016-B	2000/case	ES6047-B	ES6048-B	2000/case
Green	ES6014-G	ES6015-G	ES6016-G	2000/case	ES6047-G	ES6048-G	2000/case
Gray	ES6014-GY	ES6015-GY	ES6016-GY	2000/case	ES6047-GY	ES6048-GY	2000/case
Lilac	ES6014-L	ES6015-L	ES6016-L	2000/case	ES6047-L	ES6048-L	2000/case
Orange	ES6014-O	ES6015-O	ES6016-O	2000/case	ES6047-O	ES6048-O	2000/case
Pink	ES6014-P	ES6015-P	ES6016-P	2000/case	ES6047-P	ES6048-P	2000/case
Peach	ES6014-PH	ES6015-PH	ES6016-PH	2000/case	ES6047-PH	ES6048-PH	2000/case
Tan	ES6014-T	ES6015-T	ES6016-T	2000/case	ES6047-T	ES6048-T	2000/case
White	ES6014-W	ES6015-W	ES6016-W	2000/case	ES6047-W	ES6048-W	2000/case
Yellow	ES6014-Y	ES6015-Y	ES6016-Y	2000/case	ES6047-Y	ES6048-Y	2000/case

Cassette Color Guide





Presto SLIDE PRINTER



Our Presto™ microscope slide printer is an ultraviolet laser model that can integrate into any laboratory or hospital information system. Permanent and resistant to degradation, the laser slide printer offers a high resolution of 500 x 500 dpi and high speed on-demand printing. Its input cartridge holds up to 100 slides and its output holds up to 35 slides. The on-demand printing model captures detail via barcoding, QR code, logo, alphanumeric, and graphic printing. Implementing the new Azer Scientific slide printer aids in a time management workflow that you will not want to resist.

- Ultraviolet laser
- Permanent and resistant to degradation
- Integrate to LIS/HIS system
- Input cartridge holds up to 100 slides and output holds up to 35 slides
- Barcode, QR code, logo, alphanumeric, graphic printing

Cat. No.	Description	UOM
ES39910	Presto™ slide printer	Each

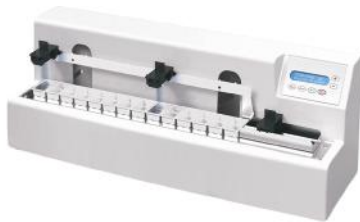
Unifrost® Microscope Slides

- Pre-cleaned with smooth, grounded edges
- Made from high-quality, white German glass
- All slides feature a single side, color frosted end to help reduce amount of jamming in automated systems
- The frosted ends are resistant to all common chemicals used in the histology laboratory
- Adhesive slides are available, prepared with a permanent adhesive which firmly anchors all specimen types to the slide



Color	Standard	Clipped corner	Standard (+)	Clipped corner (+)	Thermal	Thermal (+)	UOM
Aqua	EMS200A	EMSC200A	EMS200A+	EMSC200A+	EMS200A-TH	EMS200A-TH+	1440/case
Blue	EMS200B	EMSC200B	EMS200B+	EMSC200B+	EMS200B-TH	EMS200B-TH+	1440/case
Green	EMS200G	EMSC200G	EMS200G+	EMSC200G+	EMS200G-TH	EMS200G-TH+	1440/case
Gray	EMS200GY	-	EMS200GY+	-	-	-	1440/case
Lilac	EMS200L	EMSC200L	EMS200L+	EMSC200L+	-	-	1440/case
Orange	EMS200OR	EMSC200OR	EMS200OR+	-	-	-	1440/case
Pink	EMS200P	EMSC200P	EMS200P+	EMSC200P+	EMS200P-TH	EMS200P-TH+	1440/case
White	EMS200W	EMSC200W	EMS200W+	EMSC200W+	EMS200W-TH	EMS200W-TH+	1440/case
Yellow	EMS200Y	EMSC200Y	EMS200Y+	EMSC200Y+	EMS200Y-TH	EMS200Y-TH+	1440/case

AZERPATH Linear Stainer



- Ideal for H&E stains up to 4 slides at a time per slide carrier
- Designed and manufactured in the USA

Cat. No.	Description	UOM
ES39300	AzerPath linear stainer, ST100	Each

AZERPATH Lighted Tissue Floating Bath



- Precision temperature controlled
- Digital microprocessor control with advanced safety over temperature protection
- L.E.D. illuminated black background with transparent PYREX® dish

Cat. No.	Description	UOM
ES4551	AzerPath lighted tissue floating bath	Each

Azer-Ink Chemically Resistant Markers



- Smear-proof, waterproof, and odorless
- Resistant to histology chemicals such as xylene and alcohol
- Permanent on writing surface of slides and cassettes

Cat. No.	Description	UOM
ES-001	Azer-Ink, chemically resistant markers	12/box

Prefilled Formalin Containers

Azer Scientific's pre-filled formalin containers are half-filled with a traditional 10% neutral buffered formalin fixative, used in histological applications for fixation and storage of tissue specimens. Our line of pre-filled containers are specifically designed for safe collection and transport of various sized tissue specimens.

- Polypropylene containers with polyethylene screw caps
- Features a Formalock™ closure which makes two audible "clicks" and guarantees the container's seal is fully engaged and is 95 kPa compliant



Cat. No.	Description	UOM
PFNBF-20	20 mL Prefilled formalin, Formalock™	32/pack, 4 packs/case
PFNBF-40	40 mL Prefilled formalin, Formalock™	24/pack, 2 packs/case
PFNBF-60	60 mL Prefilled formalin, Formalock™	27/pack, 2 packs/case
PFNBF-90	90 mL Prefilled formalin, Formalock™	12/pack, 4 packs/case
PFNBF-120	120 mL Prefilled formalin, Formalock™	24/pack, 2 packs/case

Larger sizes available!

Biohazard Bags



- 3-wall reclosable biohazard transport bags
- Feature separate sections for specimen and for paperwork

Cat. No.	Description	UOM
ESB6X9	Biohazard bag, 6 x 9 in	100/pack, 10 pack/case
ESB6X9-AP	Biohazard bag, 6 x 9 in, 3 x 5 in absorbent pad	100/pack, 10 pack/case
ESB8X10	Biohazard bag, 8 x 10 in	100/pack, 10 pack/case
ESB12X15	Biohazard bag, 12 x 15 in	100/pack, 10 pack/case

Formalin Pads



- Designed for formalin absorption and glutaraldehyde
- Each sheet will absorb & neutralize up to 120 mL (ES86672) or 220 mL (ES86673)
- Dense enough to provide an excellent grossing surface
- Neutralize hazardous vapors

Cat. No.	Description	UOM
ES86672	FormaPad™ grossing pad, 8 x 11 in	25/pack, 4 packs/case
ES86673	FormaPad™ grossing pad, 11 x 15 in	25/pack, 4 packs/case

Reagent Grade Alcohol



- Works well for tissue processing and in staining applications
- Approved for sale under U.S. regulations

Cat. No.	Description	UOM
ES749	70% Reagent alcohol	4 gallons/case
ES753	95% Reagent alcohol	4 gallons/case
ES631	100% Reagent alcohol	4 gallons/case

Methyl Alcohol



- Ideal for specialty fixation and dehydration
- Used for fixation of blood and bone marrow smears

Cat. No.	Description	UOM
ES607	Methyl alcohol, methanol	4 gallons/case

Xylene



- Laboratory grade quality suitable for procedures in histology
- Used as a clearing agent and deparaffinizing
- Remove paraffin from dried microscope slides

Cat. No.	Description	UOM
ES609	Xylene	4 gallons/case



AzerFin™ Paraffin

- Prevents residue from remaining in your paraffin heating system or embedding center
- Performs optimally with many sample types, from small specimens to hard tissue samples
- AzerFin™ paraffin is designed for softer paraffin applications
- AzerFin™ Advance paraffin is designed for harder paraffin applications



Cat. No.	Description	UOM
ES34901	AzerFin™ paraffin, 1 kg	8 bags/case
ES34903	AzerFin™ Advance paraffin, 1 kg	8 bags/case

Ultra Hematoxylin



- Hematoxylin does not require daily filtering
- Lot to lot consistency
- Premixed and ready to use
- Suitable for cytology and histology labs

Cat. No.	Description	UOM
ES36101	Ultra hematoxylin, 500 mL	4 bottles/case

Ultra Eosin-Y



- Provides familiar and vibrant cytoplasmic staining and differentiation
- Alcoholic and acidified, a favorite of many pathologists and other end users

Cat. No.	Description	UOM
ES36111	Ultra eosin-Y, 500 mL	4 bottles/case

Ultra Bluing Reagent



- Ideal for labs without alkaline water
- Tints reddish hematoxylin stain results to blue/purple
- Provides a better contrast to pink eosin stain results

Cat. No.	Description	UOM
ES36157	Ultra bluing reagent, gallon	4 gallons/case

Quicksmart® Bladeflask Scalpel Blade Remover



- Single-handed blade removal
- 50 blade capacity
- Puncture-proof sharps container

Cat. No.	Description	UOM
ES4482	Quicksmart® Bladeflask scalpel blade remover	Each

Microtome Blades



- Special coating allows for a clean sectioning process that won't scratch specimens and prevents curling
- Proficiency even against the most difficult tissues

Cat. No.	Description	UOM
ES33670	Azer microtome blades, low profile	50/pack
ES33675	Azer microtome blades, high profile	50/pack

Plain & Frosted Microscope Slides



Cat. No.	Description	UOM
23110	Plain slide, 3 x 1 in x 1 mm	1440/case
2752510	Plain slide, 75 x 25 x 1 mm	1440/case
2752511	Frosted slide, single end, 75 x 25 x 1 mm	1440/case
2752512	Frosted slide, double end, 75 x 25 x 1 mm	1440/case

Cover Glass



- Pure white borosilicate glass of the first hydrolytic class
- Optimized for both manual and automated coverslipping
- Excellent chemical resistance, and optimal flatness

Cat. No.	Description	UOM
112450	24 x 50 mm, no. 1	1 oz/pack, 10 packs/case
112460	24 x 60 mm, no. 1	1 oz/pack, 10 packs/case
200121	12 mm circle, no. 1	1 oz/pack, 10 packs/case
200181	18 mm circle, no. 1	1 oz/pack, 10 packs/case

High Precision Cover Glass

- For objectives with high numerical aperture and resolution
- Exceptionally accurate thickness 170 µm ±5 µm
- Thickness no. 1.5H

Cat. No.	Description	UOM
ES0107032	18 x 18 mm	2000/case
ES0107052	22 x 22 mm	2000/case
ES0107222	24 x 50 mm	1000/case
ES0107242	24 x 60 mm	1000/case
ES0117500	10 mm circle	1000/case
ES0117520	12 mm circle	1000/case
ES0117580	18 mm circle	1000/case

Azer Metal Slide Cabinet

- Each slide cabinet features 6 drawers
- 4,500 standard slide capacity
- Reinforced design and heavy gauge steel makes the cabinet sturdy and stackable
- Rubber compressor blocks are included with each cabinet
- Cabinet measures 15.75 x 18.75 x 5.75 in



Our slide cabinet system includes 12 cabinets and one base to allow for safe stacking of units. The slide cabinet system holds up to 54,000 slides in less than 2 square feet of space.

Description	UOM	Green	Tan
		Cat. No.	Cat. No.
Cabinet, 6 drawer	Each	ES3925G	ES3925T
Cabinet base	Each	ES3927G	ES3927T
Cabinet system (12 cabinets & 1 base)	Each	ES3926G	ES3926T

Slide Storage Boxes

- Slide storage boxes are available in 25, 50, or 100 slide capacities
- Storage boxes feature a self-locking lid
- Numerical labels for easy identification of slides
- Cork-lined bottom
- Designed for stacking



25 Capacity			50 Capacity			100 Capacity		
Cat. No.	Color	UOM	Cat. No.	Color	UOM	Cat. No.	Color	UOM
ES3249	White	200/case	ES3254	White	100/case	ES3259	White	50/case
ES3250	Blue	200/case	ES3255	Blue	100/case	ES3260	Blue	50/case
ES3251	Green	200/case	ES3256	Green	100/case	ES3261	Green	50/case
ES3252	Red	200/case	ES3257	Red	100/case	ES3262	Red	50/case
ES3253	Yellow	200/case	ES3258	Yellow	100/case	ES3263	Yellow	50/case

Cardboard Slide Folders

- Pop-up cardboard slide folders hold 20 slides
- Each slide location is numbered
- Available with black, blue, green, red, and yellow bindings to aid in organization within the lab



Cat. No.	Color	UOM
ES020-BK	Black binding	72/case
ES020-B	Blue binding	72/case
ES020-G	Green binding	72/case
ES020-R	Red binding	72/case
ES020-Y	Yellow binding	72/case





Rockers & Shakers



Cat. No.	ES3358	ES3357	ES3356	ES3361	ES3359
Description	3-D Rocker	Mini 3-D shaker	2-D Rocker	3-D Shaker	Mini 3-D shaker
Included Mat	Flat mat	Flat mat	Flat mat	Dimpled mat	Dimpled mat
Capacity		4 lbs (1.8 kg)	5 lbs (2.3 kg)		4 lbs (1.8 kg)
Speed		12 rpm (fixed)			24 rpm (fixed)
Tilt Angle		Fixed, +/- 8°			Fixed, +/- 20°
Operating Temp.	+4°C to +50°C		+4°C to +45°C		+4°C to +50°C
Dimensions	12 x 12 x 8 in	10.5 x 7.5 x 8 in	13.5 x 12 x 4.7 in	12 x 12 x 8 in	10.5 x 7.5 x 8 in
Weight	4.4 lbs (2 kg)		6.5 lbs (3 kg)		4.4 lbs (2 kg)
Electrical			115V, 50/60Hz, 50W		
Usage		Gel blotting, washing, staining		Mixing blood & centrifuge tubes	

Rockers | Variable Speed



Cat. No.	ES59450	ES59452
Description	2-D Rocker	3-D Rocker
Platform Size	14 x 12 in	12 x 12 in
Capacity	8 lbs. (3.6 kg)	5 lbs (2.3 kg)
Speed		Variable, 2 to 30 rpm
Tilt Angle		Variable, 0 to 30°
Operating Temp.		+4°C to +50°C
Dimensions	14 x 12 x 8 in	12 x 12 x 8 in
Weight		7.5 lbs (3.4 kg)
Electrical		115V, 50/60Hz, 50W
Usage		Gel blotting, washing, staining

Heavy Duty Digital Shakers



Large capacity shakers designed for the heaviest of loads with the most powerful drive mechanism of all the shakers. The shaking systems continuously monitors shaking speed and maintains the set-point even when changing loads. The microprocessor control provides consistent uniform shaking while safely ramping to the set speed. The shaker will automatically restart and display last set-point if power is interrupted. Touchpad controls with easy-to-read, independent LED displays for speed and time allow operator to view both settings at once. There is a built in load sensor that will detect unbalanced conditions and automatically reduce rpm to a safe speed.

Cat. No.	Description	UOM
ES59472-HDXL25	Heavy duty digital shaker, 25 mm orbit, 68kg cap.	Each
ES59472-HDXL51	Heavy duty digital shaker, 51 mm orbit, 68kg cap.	Each

Orbital Microplate Shaker | Variable Speed

Cat. No.	ES59438
Description	Orbital microplate shaker
Capacity	Up to 4 microplates
Speed	Variable, 200 to 1,500 rpm
Operating Temp.	+4 to +65°C
Dimensions	13.1 x 11.7 x 4.7 in (33 x 30 x 12 cm)
Weight	12 lbs (5.5 kg)
Electrical	100V, 50/60Hz, 250W



Cat. No.	Description	UOM
ES3374	Flat mat, large, 12 x 12 in	Each
ES3375	Dimpled mat, large, 12 x 12 in	Each
ES3379	Flat mat, small, 10.5 x 7.5 in	Each
ES3380	Dimpled mat, small, 10.5 x 7.5 in	Each
ES3372	Platform w/ flat mat, 12 x 12 in	Each
ES3378	Platform w/ dimpled mat, 10.5 x 7.5 in	Each

Mini Microplate Centrifuge

- Quickly spins down droplets in PCR plates
 - Unique rotor design prevents sample spillage allowing user to insert plates at angle, plates automatically swing into a vertical position
 - Accepts all popular PCR plates
- Dimensions:** 9.2 x 10.2 x 7.75 in
Speed: 2,550 rpm / 600 xg

Cat. No.	Description	UOM
ES59770	Mini microplate centrifuge	Each
ES59772	Adapter, 96 x 0.2 mL tubes or 12 x PCR strips	2/pack
ES59774	Rotor for deep well plates	Each



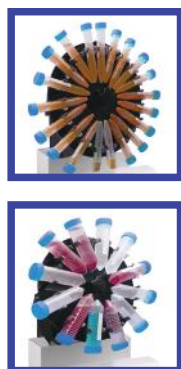
Azer Vortex Mixer



- Smooth and powerful mixing technology
 - Reversible rubber head can easily be flipped over and reattached in reverse orientation
 - Vortex single tubes and uniquely shaped vessels
- Speed Range:** 200 to 3,200 rpm
Dimensions: 5 x 6.3 x 6.7 in

Cat. No.	Description	UOM
ES59487	Azer vortex mixer	Each
ES59953	Horizontal head for 12 x 1.5 mL tubes	Each
ES59954	Horizontal head for 4 x 15 mL tubes	Each
ES59955	Horizontal head for 2 x 50 mL tubes	Each
ES3371	Attachment for 1 microplate or 66 tubes (38 x 1.5 mL and 28 x 0.5 mL)	Each
ES59487-F1215	Foam rack for 12 x 15 mL tubes	Each
ES59487-F0550	Foam rack for 5 x 50 mL tubes	Each

Rotating Tube Mixer



- Adjustable speed and tilt angle
- Reversing mode, for more intense mixing
- Cold room and incubator safe
- Includes three rotisseries:
 - 48 x 1.5 mL tubes
 - 20 x 15 mL tubes
 - 12 x 50 mL tubes

Cat. No.	Description	UOM
ES59411	Rotating mixer	Each

Mini Vortex Mixers



- Instantly vortexes samples up to 50 mL
 - Pressure activated start/stop operation
 - Small footprint at only 4 inches wide
- Fixed Speed:** 2,800 rpm

Cat. No.	Description	UOM
ES59484	Mini vortex mixer, gray	Each
ES59484B	Mini vortex mixer, blue	Each
ES59484G	Mini vortex mixer, green	Each
ES59484P	Mini vortex mixer, purple	Each
ES59484R	Mini vortex mixer, red	Each

HIGH QUALITY TEACHING CHEMICALS

- Acetone
- Buffer solutions
- Calcium hydroxide
- Hydrogen peroxide
- Magnesium sulfate

- Methylene blue
- Nitric acid
- Copper II chloride
- Hydrochloric acid
- Sulfuric acid



SEE MORE



Microcentrifuges

Cat. No.	ES89425	ES86448	ESCM5
Description	High speed microcentrifuge	Touch microcentrifuge	AzerFuge 5 microcentrifuge
Features	LCD display	Full color touch screen	-
Speed	500 to 15,500 rpm (up to 16,100 xg)	1,000 to 13,500 rpm (100 to 16,800 xg)	5,500 rpm (2,000 xg)
Capacity	12 x 1.5/2.0 mL	24 x 1.5/2.0 mL, 2 x PCR strips (16 x 0.2 mL), 8 x 5 mL, 12 x 2 mL spin column, 8 x cryovials	4 x 5 mL tubes & 4 x 1.5/2.0 mL tubes
Acceleration	10 seconds	-	-
Deceleration	12 seconds	-	-
Speed increment	100 rpm or 100 rcf	100 rpm or 100 rcf	-
Timer	20 sec. to 99 min. / cont.	20 sec. to 99 min. / cont.	-
Momentary	Yes	Yes	No
Dimensions (W x D x H)	8.7 x 10.6 x 5.9 in (22 x 27 x 15 cm)	9 x 12 x 7.75 in (23 x 30.5 x 19.7 cm)	5.5 x 7.9 x 5.5 in (14 x 20 x 14 cm)
Weight	10.5 lbs (4.8 kg)	14 lbs (6.4 kg)	2.2 lbs (1 kg)
Electrical	115V, 50/60Hz, 100W	115V, 50/60Hz, 100W	100V, 50/60Hz, 250W
Adapters	0.5 mL tube (ES89425-05A) 0.2 mL tube (ES89425-02A)	0.5 mL tube (ES89448-05)	1.5mL PCR strips (ESCM5-R15P)

Mini Centrifuge

- Instant rotor attachment, eight position microtube rotor
- Storage compartment for PCR rotor & 0.5 mL adapters
- Near silent operation, decelerates in just one second
- Four position PCR strip rotor

Maximum speed: 6,000 rpm (2,000 xg)



Cat. No.	Description	UOM
ES89421B	Mini centrifuge, blue lid	Each
ES89421	Mini centrifuge, clear lid	Each
ES89421G	Mini centrifuge, green lid	Each
ES89421P	Mini centrifuge, purple lid	Each
ES89421R	Mini centrifuge, red lid	Each



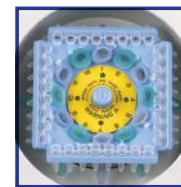
Z207-A | Clinical Centrifuge



- Large back-lit, liquid crystal display
- Unique EZ-Scroll™ touch pad
- Safety imbalance detection system
- Electrical lid lock

Cat. No.	ESCZ207-A
Speed range	200 to 6,800 rpm (10 to 4,445 xg)
Capacity	8 x 15 mL, 8 x 5/7 mL
Speed increments	10 rpm to 10 rcf
Timer	Up to 59 hrs. 99 min./cont.
Momentary	Yes
Dimensions (H x W x D)	11 x 13.7 x 9.5 in (28 x 35 x 24 cm)
Weight	17.6 lbs (8 kg)
Electrical	115V, 50/60Hz, 100W

AzerFuge 12 Mini Centrifuge



- 12-place combination rotor accommodates both microcentrifuge tubes and PCR strips
 - Holds up to 4 x 8-tube PCR strips and/or 12 microcentrifuge tubes
 - Simple start and stop with the closing and opening of the lid
 - Quiet while operating
 - Compact, low-profile design
- Dimensions:** 5.75 x 8 x 4.25 in (14.6 x 20.3 x 10.8 cm)
Speed: 5,500 rpm / 2,000 xg

Cat. No.	Description	UOM
ES59810	AzerFuge 12 mini centrifuge	Each

Pulse 150 Ultrasonic Homogenizer



- Ideal for cell disruption, DNA shearing and ChIP assays
- Programmable with touch screen control and pulsed operation
- For volumes 0.1 to 150 mL
- Supplied complete with 6 mm horn, temperature probe and soundproof enclosure

Horn	2mm	3mm	6mm*	8mm
Horn size	2mm	3mm	6mm*	8mm
Process capacity	0.1 - 5ml	3-10ml	10-100ml	20-150ml
Power ratio	1 - 45%	1 - 55%	1 - 75%	1 - 90%

*Supplied with Pulse 150

Cat. No.	Description	UOM
ES59808	Pulse 150 ultrasonic homogenizer w/ controller, transducer, 6 mm horn and soundproof enclosure	Each
ES59808H-2	Horn, 2 mm diameter, for 0.1 - 5 mL	Each
ES59808H-3	Horn, 3 mm diameter, for 3 - 10 mL	Each
ES59808H-6	Horn, 6 mm diameter, for 10 - 100 mL	Each
ES59808H-8	Horn, 8 mm diameter, for 20 - 150 mL	Each



Microtube Homogenizers

Cat. No.	ES59461	ES59463	ES59461-24	ES59461-24R
Description	3-place microtube homogenizer	6-place microtube homogenizer	24-place microtube homogenizer	24-place microtube homogenizer, refrigerated
Speed range	2,800 to 4,000 rpm	2,500 to 4,350 rpm	4 to 7 m/s (0.05 m/s increments)	4 to 7 m/s (0.05 m/s increments)
Capacity	3 x 2 mL (Screw cap / non-skirted)	6 x 2 mL or 2 x 5 mL* *Requires 5 mL adapters, sold separately	24 x 2 mL tubes or 12 x 5 mL* *Requires 5 mL adapters, sold separately	
Dimension (W x D x H)	6.9 x 8.3 x 5.3 in	8.6 x 14 x 8 in	11 x 14.2 x 15.2 in	12.6 x 20.1 x 16.2 in
Weight	5 lbs (2.2 kg)	20 lbs (9 kg)	55 lbs (25 kg)	88 lbs (40 kg)
Cycle time	3 to 180 sec	0 to 90 sec (1 sec increments)	1 to 90 sec (1 sec increments)	1 to 90 sec (1 sec increments)
Pauses between cycles	-	0 to 90 sec (1 sec increments)	0 to 2 min (1 sec increments)	0 to 2 min (1 sec increments)
Max # of cycles, per program	-	10	10	10
Accel. / decel. time	-	≤ 2 sec / ≤ 2 sec	<2 sec / <2 sec	<4 sec / <4 sec
Program memory	-	Last programmed parameters remain in memory for repeated runs	up to 50	up to 50

Prefilled Homogenizer Tubes

- Each prefilled tube kit includes screw top tubes with cap, sealing rings, and beads (detailed below)
- The high impact zirconium beads are acid washed, heat treated, and ideal for molecular biology applications
- A starter kit (ES59465K) is available to accommodate a range of samples



Cat. No.	Description	UOM
ES59464-01	Standard glass beads, 0.1 mm diameter, 2 mL	50/pack
ES59464-05	Standard glass beads, 0.5 mm diameter, 2 mL	50/pack
ES59464-10	Standard glass beads, 1.0 mm diameter, 2 mL	50/pack
ES59465-01	High impact zirconium beads, 0.1 mm diameter, 2 mL	50/pack
ES59465-05	High impact zirconium beads, 0.5 mm diameter, 2 mL	50/pack
ES59465-10	High impact zirconium beads, 1.0 mm diameter, 2 mL	50/pack
ES59465-15	High impact zirconium beads, 1.5 mm diameter, 2 mL	50/pack
ES59465-30	High impact zirconium beads, 3.0 mm diameter, 2 mL	50/pack
ES59465K	Starter kit, high impact zirconium beads, 0.1-3.0 mm, 2 mL	10 each/size, 50/pack
ES59466-28	Stainless steel beads, 2.8 mm diameter, 5 mL	50/pack
ES59469-2T	Empty tubes, 2.0 mL	1000/pack

Bead Diameter	Silica			Zirconium					Steel
	0.1mm	0.5mm	1.0mm	0.1mm	0.5mm	1.0mm	1.5mm	3.0mm	2.8mm
Adipose							x		
Artery								x	x
Bone									x
Brain								x	x
Insect - Fly									x
Insect - Tick									x
Insect - Mosquito						x			x
Gonad								x	x
Hair									x
Heart								x	x
Kidney									x
Liver								x	x
Lung								x	x
Muscle									x
Pancreas								x	x
Skin									x
Spleen								x	x
Teeth									x
Algae		x				x			
Bacteria	x	x		x	x				
Fungi		x	x		x	x			
Mold		x			x				
Spores		x	x		x	x			
Yeast		x	x		x	x			
Leaves									x
Nuts									x
Plant, soft tissue									x
Plant, tough tissue									x
Seeds									x
Stems									x
Soil								x	
Coral									x
Stool								x	
Scat									x



SmartReader™ Absorbance Reader



Cat. No.	ES59850*	ES59853-CP	ES59853
Description	SmartReader™ 96 microplate absorbance reader	SmartReader™ UV-Vis M.A.R. w/ cuvette port	SmartReader™ UV-Vis microplate absorbance reader
Control & display	7 in touch screen	10 in color touch screen and mouse	10 in color touch screen and mouse
Light source	Quartz-halogen lamp 6V/10W	Xenon flash lamp	Xenon flash lamp
Wavelength range	340-750 nm (405, 450, 492 & 630 nm filters included)	200 - 1,000 nm	200 - 1,000 nm
Readout range	0~4.000 Abs	0 - 4.0 OD	0 - 4.0 OD
Detector	-	Dual silicon photoelectric detectors for measurement & reference	Dual silicon photoelectric detectors for measurement & reference
Half-bandwidth of filters	3~9nm	-	-
Linearity (405nm)	0~2.000 Abs <+1%, 0~4.000 Abs <+2%	R2 ≥ 0.999, [0.0 - 3.0]	R2 ≥ 0.999, [0.0 - 3.0]
Accuracy@450nm	-	1.0% + 0.003 Abs (0 - 2.0), 2.0% (2.0 - 2.5 Abs)	1.0% + 0.003 Abs (0 - 2.0), 2.0% (2.0 - 2.5 Abs)
Precision@450nm	CV ≤/ = 0.2% (0-3) Abs, CV ≤/ = 1.0% (3-4) Abs	CV < 0.5% or SD<0.003 (precision mode); CV < 1.0% (fast mode)	CV < 0.5% or SD<0.003 (precision mode); CV < 1.0% (fast mode)
Stability@450nm	-	< 0.005A , (0.0 - 2.0), < 2% (2.0 - 2.5 Abs)	< 0.005A , (0.0 - 2.0), < 2% (2.0 - 2.5 Abs)
Measurement speed	-	96 well plate: <6 seconds (fast mode); <25 seconds (precision mode), 384 well plate: <74 seconds (only precision mode available for 384)	96 well plate: <6 seconds (fast mode); <25 seconds (precision mode), 384 well plate: <74 seconds (only precision mode available for 384)
Plate shaking	3 modes: slow (3.5Hz), medium (4.7Hz), fast (7.0Hz)	Linear; three levels of shaking speed	Linear; three levels of shaking speed
Incubator	Temp control from ambient +5°C to 50°C (ES59850-INC only)	From ambient + 5°C to 45°C	From ambient + 5°C to 45°C
Temperature uniformity	-	± 0.5°C @ 37°C	± 0.5°C @ 37°C
Storage	200 programs, 100,000 test records	16G memory, more than 10,000 test records can be stored	16G memory, more than 10,000 test records can be stored
Connection ports	USB port for PC, printer, mouse or flash drive	3 USB ports, for PC, printer and USB-flash drive	3 USB ports, for PC, printer and USB-flash drive
Power supply	-	DC24V 6.5A	DC24V 6.5A
Test speed	<6 sec. for 96-well plate	-	-
Dimensions (W x D x H)	11.6 x 17 x 8.75 in. (295 x 440 x 225 mm)	11.8 x 19.7 x 10.25 in. (300 x 500 x 260 mm)	11.8 x 19.7 x 10.25 in. (300 x 500 x 260 mm)
Weight	22 lbs. (10kg)	34 lbs. (15.5 kg)	34 lbs. (15.5 kg)

*Add "-INC" to ES59850 on your order for incubating model. e.g. ES59850-INC

SmartSeal™ Semi-Automated Plate Sealer



- Fast, reproducible sealing of well plates
- Adjustable time, temperature, and pressure for optimized sealing
- User friendly controls, load plate and press run to seal
- Accepts a wide range of plate types and heights, including deep well storage plates, assay plates, PCR plates, etc.

Cat. No.	ES59855
Temp. range	80°C to 200°C
Temp. heat up	6 minutes to reach 200°C
Temp. accuracy	1°C
Sealing time	0.5 sec to 10 sec (0.1 sec increments)
Max. plate height	48 mm
Dimensions (W x H x D)	7 x 14.6 x 13 in (17.8 x 37 x 33 cm)
Weight	21 lbs (9.5 kg)
Electrical	115V, 50-60 Hz, 300W

Multi Block Thermal Cycler



- Dual block format
- Independently controlled blocks
- Intuitive touch screen control with adjustable viewing angle
- Program wizard for quick and easy set up
- Gradient capabilities in each block

Cat. No.	ES59727-248	ES59727-332
Capacity	2 x 48-well blocks	3 x 32-well blocks
Heating & cooling	Peltier elements	
Display	10" full color touch screen w/ adjustable angle	
Block temp. range	4°C to 99.9°C	
Max. heating rate	7.5°C/sec	
Min. cooling rate	6°C/sec	
Ramp rate adjustment	0.1°C to 5°C	
Temp. uniformity / accuracy	±0.2°C (at 90°C)	
Gradient functionality	Yes, 8 different temps/block	
Gradient accuracy	±0.1°C	
Gradient range	30°C to 99.9°C	
Heated lid	Yes, 30°C to 112°C	
Power	100-240V, 50-60Hz	
Dimensions (L x W x H)	14.75 x 10.5 x 10.9 in (37.5 x 27 x 27.7 cm)	
Weight	28.7 lbs (13 kg)	

Mini Thermal Cycler



- "Mini" sized, 9 x 7 in footprint
 - Accepts 32 x 0.2 mL tubes or 4 PCR strips
 - Intuitive touch screen control
 - Program wizard with familiar icon driven programming
 - Optimize results with Accuris™ PCR reagents
- Temperature control range:** 0°C to 99°C
Temperature accuracy: ±0.25°C
Temperature uniformity: ±0.25°C
Lid temperature: 30°C to 112°C
Dimensions: 7.2 x 9.2 x 6.2 in

Cat. No.	Description	UOM
ES59720	Mini thermal cycler	Each

Thermal Cycler



- Features an intuitive touchscreen control, designed for quick and easy protocol entry
 - Multi-format block accepts 96 x 0.2 mL tubes, 39 x 0.5 mL tubes or 1 x 96 well plate (non-skirted)
 - Exceptionally fast cycling
 - Fully adjustable heated lid
- Temperature control range:** 0° to 100°C
Ramp rate: 5°C/sec (maximum)
Lid temperature: 30°C to 112°C
Dimensions: 10.2 x 14.2 x 9.9 in

Cat. No.	Description	UOM
ES59721	Thermal cycler	Each

UV Cabinet/PCR Workstations



The UV cabinet/PCR workstations include economical and general-purpose design ideal for short-term procedures. Equipped with an open UV lamp installed in the upper part of the hood. UV-radiation from these lamps effectively disinfects the working area chamber, inactivating DNA/RNA fragments during 15-30 minutes of exposure.

- UV exposure controlled by 24h digital timer
- Convenient, easy to use digital timer for accurate control of UV exposure
- White lamp provides local illumination of the workplace to optimize visual control during operations
- Automatic switch-off of irradiated UV light when door opened

Cat. No.	Description	UOM
ES53511	UV cabinet/PCR workstation economy, glass front, dual UV protection lamp and UV recirculator	Each
ES53515	UV cabinet/PCR workstation, double, s. steel work surface, glass sides & front, dual UV protection lamp and UV recirculator	Each



Microplate Washer, 96 well plates

- Precision control of aspiration needle position
 - Accurate to 0.1 mm
 - Minimal residual liquid, $\leq 1 \mu\text{L}$ /well
- Auto rinse function eliminates cross contamination
- Up to 100 wash protocols can be customized and stored
- Liquid level sensors in wash and waste bottles
- Wash protocols can be transferred via flash drive



Multiple aspiration point settings (one, two or three positions) to optimize liquid aspiration from different plate types



Compatible with all common microplate well shapes



Cat. No.	Description	UOM
ES59851	Microplate washer for 96-well plates	Each

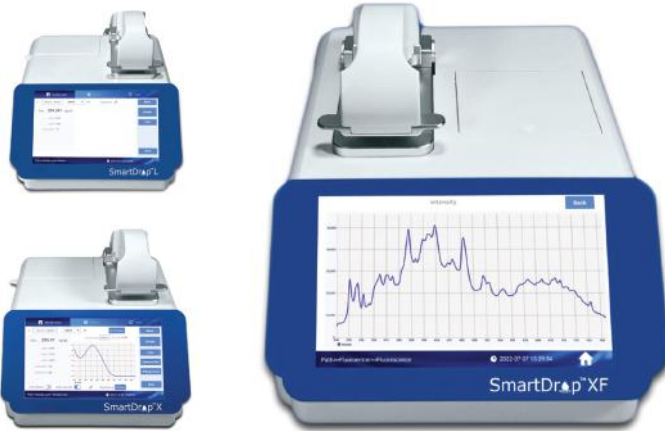
Cell Counter

- Fast, accurate, and reproducible results
- Intuitive software with auto-focus and touch-screen interface
- Cost-effective quadslides - disposable slides with four individual chambers
- Increased counting accuracy, with counting volumes up to $3.6 \mu\text{L}$
- 3 count modes available to analyze different sample volumes:
 - Quick mode: $0.15 \mu\text{L}$ / 20 seconds (1 image frame)
 - Normal mode: $0.9 \mu\text{L}$ / 30 seconds (6 image frames)
 - Precise mode: $3.6 \mu\text{L}$ / 100 seconds (24 image frames)



Cat. No.	Description	UOM
ES59760	QuadCount automated cell counter, 115V	Each
ES59760-S1	QuadSlides, disposable single-use slide cell counters	50/pack

SmartDrop Nano Spectrophotometers



SmartDrop L

- Ideal for basic DNA/RNA/protein quantification and purity
- Affordable LED and silicon detector technology
- Fixed 0.5 mm path length, detect up to $2,500 \text{ ng}/\mu\text{L}$ of dsDNA

SmartDrop X

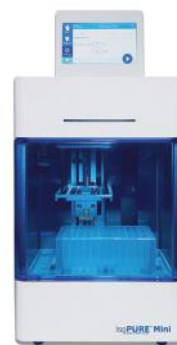
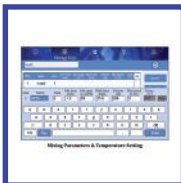
- Full-spectrum absorbance scans from 200 nm to 800 nm
- Quickly calculates and displays 260/280 and 260/230 ratios
- Long-life xenon lamp with precision monochromator
- Auto-ranging path lengths of 0.2 mm and 1.0 mm
- Detect up to $4,500 \text{ ng}/\mu\text{L}$ of dsDNA without dilution

SmartDrop XF

- Full-spectrum absorbance scanning and calculations of 260/280 and 260/230 ratios
- Long-life xenon lamp with precision monochromator
- Auto-ranging path lengths of 0.05 mm, 0.2 mm and 1.0 mm
- Detect up to $15,000 \text{ ng}/\mu\text{L}$ of dsDNA without dilution
- Integrated fluorometer for sensitive quantitation of low concentration nucleic acids

Cat. No.	Description	UOM
ES59805-L	SmartDrop L nano spectrophotometer	Each
ES59805-X	SmartDrop X nano spectrophotometer	Each
ES59805-XF	SmartDrop XF nano spectrophotometer	Each

IsoPure™ Automated Purification Systems



- Compatible with all popular magnetic bead kits
- Touch screen panel for on-board programming and operation
- Process up to 96 samples in deep-well plates
- 8-position carousel with 2 heating blocks
- Can handle sample volumes from 50 µL to 1,000 µL

- Fast, reliable, and reproducible results
- Compatible with all popular magnetic bead kits
- Compact (8 x 10 in footprint)
- Process up to 16 samples
- Programmable with PC software or Android app
- Sample volume 50 µL – 1,000 µL

Cat. No.	Description	UOM
ES59800	IsoPure™ 96, automated purification system	Each
ES59800-MINI	IsoPure™ mini, automated purification system	Each

Automated Purification System Consumables



Mag-Bind® TotalPure NGS Magnetic Beads



Cat. No.	Description	UOM
ES53486	200 µL, 96-Well plate, PP, V bottom, automation compatible, clear, 0.25 mL	50/case
ES53487	96-Well plate, PP, V bottom, automation compatible, clear, 2.2 mL	50/case
ES53488	24-Deep well plate, PP, V bottom, automation compatible, clear, 5 mL	50/case
ES53489	96 Magnetic tip comb, Sapphire Advance	100/case

Cat. No.	Size	UOM
ES52374-5ML	5 mL	Each
ES52374-50ML	50 mL	Each
ES52374-500ML	500 mL	Each

Densitometers



- LED display, readings shown in McFarland units
- Factory calibrated - retains calibration without power supply
- Can be user calibrated with commercial standards or cell suspensions prepared in the laboratory
- For tubes with an outer diameter of 18 mm, 16 mm tubes can also be accommodated by using the optional tube adaptor
- Extremely compact design with small footprint and low profile fits easily into the smallest workspace
- Either battery powered by 3 x AAA or via external power supply (ES59809P)

Cat. No.	Description	UOM
ES59809	Densitometer, cell density turbidity 0-15 McFarland units	Each
ES59809P	Densitometer, portable battery/mains, cell density turbidity 0-15 McFarland units	Each

Personal Bioreactors



- Innovative mixing, reverse spinning of the sample around its own axis
- Store, display, and analyze the data in real time
- Compact, low profile, and small footprint for personal applications
- Active cooling and temperature profiling via software (ES59803C)
- Temperature control allows use as an incubator, e.g. for cell growth
- Programmable cycling/profiling of cultivation parameters such as temperature, RPM, "Reverse-Spin" frequency
- Remotely monitor the process of cultivation using a mobile phone

Cat. No.	Description	UOM
ES59803	RTS-1, Personal bioreactor	Each
ES59803C	RTS-1C, Personal bioreactor w/ cooling	Each



Balances

The Compact and Precision series use variable capacitance technology with gold plated capacitors on ceramic load cell. This reliable technology delivers accurate reading with high repeatability. Both feature external calibration and LCD displays.

The Analytic series of balances incorporate electromagnetic force restoration technology, to deliver unmatched accuracy down to 0.0001g. The analytical models are available with internal calibration (optional) and readability down to 0.0001g. All our balances feature adjustable leveling feet and leveling bubble indicator.

- User friendly interface
- Easy in-lab calibration
- RS232 interface for data output
- Multiple program options:
 - Standard weighing
 - Count/pieces mode
 - Percent deviation



Cat. No.	ES59110-120	ES59110-300	ES59110-500	ES59110-1200	ES59110-5000	ES59110-10000
Capacity	120 grams	300 grams	500 grams	1,200 grams	5,000 grams	10,000 grams
Readability	0.01 grams	0.01 grams	0.01 grams	0.1 grams	0.1 grams	0.1 grams
Pan Size (Round)	4.5 in (11.5 cm)			6.3 in (16 cm)	7 in (18 cm)	7 in (18 cm)
Draft Shield	Yes, plastic			No		
Weighing Units	carats, gram, ounces					
Measurement Units	carats, pieces, %					
Exterior Dim.	7.5 x 11 x 3.1 in (18.8 x 28 x 8 cm)					

Precision Balances

Cat. No.	ES59120-120	ES59120-320	ES59120-500	ES59120-1200	ES59120-3200	ES59120-5000
Capacity	120 grams	320 grams	500 grams	1,200 grams	3,200 grams	5,000 grams
Readability	0.001 grams	0.001 grams	0.001 grams	0.01 grams	0.01 grams	0.01 grams
Pan Size (Round)	4.5 in (11.5 cm)			6.3 in (16 cm)		
Draft Shield	Yes, glass, 3 door			No		
Weighing Units	carats, gram, ounces					
Measurement Units	carats, pieces, %					
Exterior Dim.	8 x 13.75 x 12.25 in (20.5 x 35 x 3.1 cm)			8 x 13.75 x 3.5 in (20.5 x 35 x 8 cm)		



Analytical Balances

Cat. No.	ES59130-120	ES59130-210	ES59130-120C	ES59130-210C
Capacity	120 grams	210 grams	120 grams	210 grams
Readability	0.0001 grams	0.0001 grams	0.0001 grams	0.0001 grams
Calibration	External		Internal	
Draft Shield	Yes, glass, 3 door			
Pan Size (Round)	3.5 in (9 cm)			
Weighing Units	carats, gram, ounces, pounds			
Measurement Units	carats			
Exterior Dim.	12.5 x 18.5 x 11 in (32 x 47 x 28 cm)			



Weigh Boats

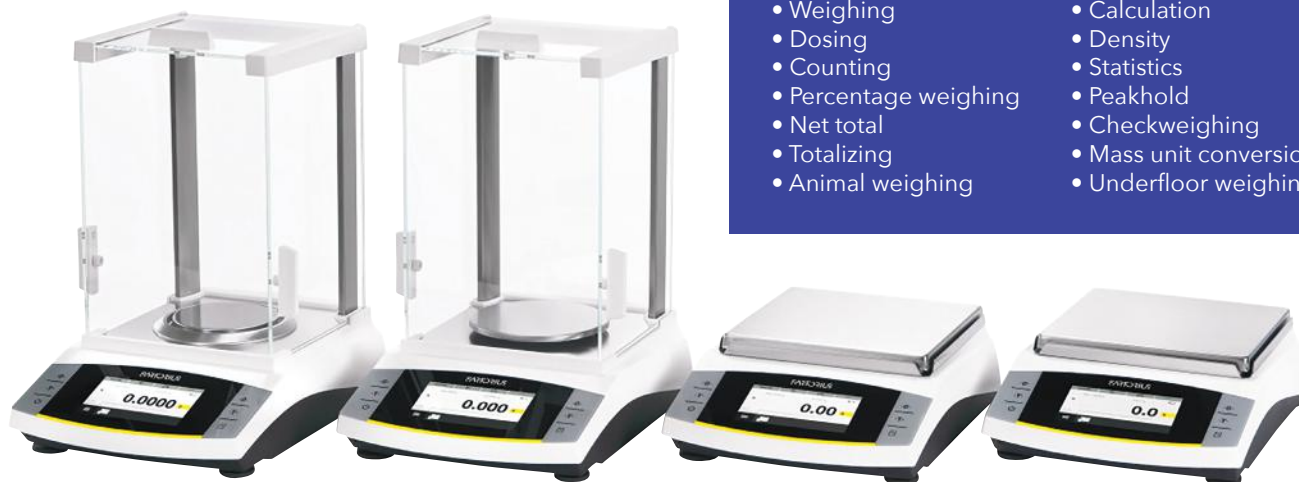


Cat. No.	Description	UOM
ES58542	20 mL Weigh boat, 45 x 45 mm, white	500/case
ES58542-BL	20 mL Weigh boat, 45 x 45 mm, black	500/case
ES58544	100 mL Weigh boat, 80 x 80 mm, white	500/case
ES58544-BL	100 mL Weigh boat, 80 x 80 mm, black	500/case
ES58546	250 mL Weigh boat 140 x 140 mm, white	500/case
ES58546-BL	250 mL Weigh boat 140 x 140 mm, black	500/case

SARTORIUS Entris® II Balances

No matter what you're weighing, the new Entris® II balance is always the right choice. Offering unrivaled value and backed by almost 150 years of German engineering expertise, the Entris® II comes in two product lines, so you can find the balance that meets your specific weighing needs.

Our Entris® II essential line is the only balance in its class offering isoCAL, LED touch technology, and 12 built-in applications at a budget price. With over 40 models from which to choose, you will surely find a model to meet your basic weighing needs.



Applications:

- Weighing
- Dosing
- Counting
- Percentage weighing
- Net total
- Totalizing
- Animal weighing
- Calculation
- Density
- Statistics
- Peakhold
- Checkweighing
- Mass unit conversion
- Underfloor weighing

Cat. No.	Weighing capacity	Readability	Readability, typical	Stabilization time, typical	Weighing pan size	Weighing chamber height	Dimensions (W x D x H)
Analytical balances							
ES59101-60	60 g	0.1 mg	0.1 mg	≤1.5 s	ø 90 mm	240 mm	219 x 317 x 345 mm
ES59101-120	120 g	0.1 mg	0.1 mg	≤1.5 s	ø 90 mm	240 mm	219 x 317 x 345 mm
ES59101-2201	220 g	0.1 mg	0.1 mg	≤1.5 s	ø 90 mm	240 mm	219 x 317 x 345 mm
Precision balances							
ES59101-220	220 g	1 mg	1 mg	≤1.0 s	ø 120 mm	240 mm	219 x 317 x 345 mm
ES59101-320	320 g	1 mg	1 mg	≤1.0 s	ø 120 mm	240 mm	219 x 317 x 345 mm
ES59101-420	420 g	1 mg	1 mg	≤1.0 s	ø 120 mm	240 mm	219 x 317 x 345 mm
ES59101-6201	620 g	1 mg	1 mg	≤1.0 s	ø 120 mm	240 mm	219 x 317 x 345 mm
ES59101-650	650 g	1 mg	1 mg	≤1.0 s	ø 120 mm	50 mm	219 x 317 x 146 mm
ES59101-620	620 g	10 mg	10 mg	≤0.9 s	182 x 182 mm	-	219 x 317 x 94 mm
ES59101-820	820 g	10 mg	10 mg	≤0.9 s	182 x 182 mm	-	219 x 317 x 94 mm
ES59101-1200	1,200 g	10 mg	10 mg	≤0.9 s	182 x 182 mm	-	219 x 317 x 94 mm
ES59101-2200	2,200 g	10 mg	10 mg	≤0.9 s	182 x 182 mm	-	219 x 317 x 94 mm
ES59101-3200	3,200 g	10 mg	10 mg	≤0.9 s	182 x 182 mm	-	219 x 317 x 94 mm
ES59101-4200	4,200 g	10 mg	10 mg	≤0.9 s	182 x 182 mm	-	219 x 317 x 94 mm
ES59101-6200	6,200 g	10 mg	10 mg	≤0.9 s	182 x 182 mm	-	219 x 317 x 94 mm
ES59101-22001	2,200 g	100 mg	100 mg	≤0.9 s	182 x 182 mm	-	219 x 317 x 94 mm
ES59101-5200	5,200 g	100 mg	100 mg	≤0.9 s	182 x 182 mm	-	219 x 317 x 94 mm
ES59101-82001	8,200 g	100 mg	100 mg	≤0.9 s	182 x 182 mm	-	219 x 317 x 94 mm
ES59101-62001	6,200 g	1,000 mg	1,000 mg	≤0.9 s	182 x 182 mm	-	219 x 317 x 94 mm
ES59101-8200	8,200 g	1,000 mg	1,000 mg	≤0.9 s	182 x 182 mm	-	219 x 317 x 94 mm

Note: Add C to the end of catalog number for internal calibration model | e.g. **ES59101-60C**



Digital Hotplates & Stirrers

- Large, back-lit LCD display
- Ceramic work surface
- Safety LED indicates hot surface
- Control actual temperature (with optional probe)
- Three models: heat-stir, heat only, or stir only



Cat. No.	ES59303	ES59313	ES59325	ES59314-10	ES59323-10
Model	Hotplate	Magnetic stirrer	Hotplate/stirrer	Magnetic stirrer	Hotplate/stirrer
Temp. Range	Ambient +5 to 400°C	-	Ambient +5 to 400°C	-	Ambient +5 to 400°C
Operating Temp. Range			+4 to +65°C		
Stir Capacity	-		5 Liters		15 Liters
Speed Range	-		100 to 1,500 rpm		150 to 1,500 rpm
Platform		7 x 7 in (17.8 x 17.8 cm)		10 x 10 in (25.4 x 25.4 cm)	
Weight		6.4 lbs (2.9 kg)		16.5 lbs (7.5 kg)	
Control			Digital		
Dimensions (W x D x H)		7 x 11.5 x 4 in (18 x 27.9 x 10.1 cm)		11.6 x 16.7 x 4.5 in (29.5 x 42.4 x 11.4 cm)	
Electrical			120V, 50/60Hz, 850W		

Industrial Hotplate Stirrers

- Simultaneous heating and stirring
- White ceramic top surface
- Effective stirring in bottles up to 1 Liter
- Digital control of both speed and temperature



Cat. No.	Description	UOM
ES59323L-5	5-Position hotplate stirrer	Each
ES59323L-10	10-Position hotplate stirrer	Each

Moisture Analyzers



Moisture analyzers makes moisture analysis simple and powerful. The temperature guide analyzes a sample and determines the optimal drying temperature. Store up to 100 drying methods for easy recall an up to 1,000 total results for statistical analysis. The precisely controlled halogen heating dries samples uniformly, producing repeatable results of 0.01% readability. Four drying profiles, predefined and user defined shut-off criteria help to perform customized sample tests. Features a removable pan handler and sample chamber for easy cleaning. Guided instructions on the touchscreen display makes this unit easy to use.

Cat. No.	Description	UOM
ES89939-MP90	MB90 Moisture analyzer	Each
ES89939-MP120	MB120 Moisture analyzer	Each

Bench/Pen pH Meters



Designed with reliable measurement and precise performance in mind. Repeatable and consistent measurement accuracy for optimal peace of mind. The large LCD display and touch keypad makes changing the parameters, executing setup, and performing calibration as simple as using a smartphone.

Cat. No.	Description	UOM
ES89935-AB41PH-B	pH Meter, aquasearcher bench meter, AB41PH	Each
ES89935-AB33PH-B	pH Meter, aquasearcher bench meter, AB33PH	Each
ES89935-AB23PH-F	pH Meter, aquasearcher bench meter, AB23PH	Each
ES89935-ST2200-F	pH Meter, starter 2200 bench meter, ST2200-F	Each
ES89935-ST2200-B	pH Meter, starter 2200 bench meter, ST2200-B	Each
ES89937-ST20M-C	pH Meter, pen meter, ST20M-C	Each
ES89937-ST20M-B	pH Meter, pen meter, ST20M-B	Each

Laboratory Hoods and Fume Hoods

- Protector® Laboratory Hoods
- XStream® for High Performance
- Premier® and XL for General Chemistry
- ClassMate® for Education
- Perchloric Acid
- Radioisotope
- Floor-Mounted
- Pass-Through Laboratory Hoods
- Basic Laboratory Hoods
- Protector Filtered Fume Hoods
- Echo™ Benchtop and Floor-Mounted
- Airo™ Benchtop
- Protector XVS Ventilation Stations
- Paramount® Ductless Enclosures
- Protector Work Stations
- Fume Absorbers
- FilterMate™ Portable Exhausters
- Canopy Hoods

LABCONCO

Contact your local Sales Representative for a price quote!

Photography credit: Dan Rockafellow

Mini Digital Incubators & CO₂ Incubator

With digital temperature control, the MyTemp incubators provide convenient “set and walk away” operation, eliminating the need for external thermometers and repetitive “fine tuning” of an analog control knob. Simply choose the desired temperature and the incubator immediately begins to heat up (or cool down, -HC model only) while accurately monitoring the chamber temperature and conveniently displaying the temperature in real time on the large LED control panel.

- Digital temperature control
- Personal sized, 13 x 14.5 in footprint (20 Liters)
- Accepts bottles and flasks up to 2 Liters
- Heat only, heat/cool or CO₂
- Internal outlet for installation of shaker, rockers, etc.



Cat. No.	ES59510	ES59510-HC	ES59510-C
Model	Mini digital incubator	Mini heat/cool incubator	Mini CO ₂ incubator
Temp. range	+5°C to +60°C	-15°C to +60°C	-10°C to +55°C
Temp. increments	1°C	1°C	0.1°C
Capacity	20 L (0.8 cu.ft.)		
Dimensions (W x D x H)			
Interior	10.3 x 9.3 x 12.8 in (26 x 23.5 x 32.5 cm)		
Exterior	13.2 x 14.5 x 18.7 in (33.5 x 37 x 47.5 cm)		
Weight	15 lbs (6.5 kg)		
Electrical	100V, 50/60 Hz		

Stackable Incubators

- Dual-stacked incubators
- Perfect for general cell culture and constant temperature applications
- Copper gas plumbing, stainless steel interior, and a glass viewing door
- Independent over temperature set point and operational control override for additional safety
- Smart alarm: accounts for door openings and temperature set point changes before alarm

Cat. No.	ES59544	ES59544-CO ₂
Model	Standard	CO ₂
Volume	11.7 cu.ft. (332 Liters)	5.0 cu.ft. (142 Liters)
Temp. Range	Amb +8°C to +70°C	Amb +5°C to +60°C
Temp. Uniformity	0.5°C	0.25°C
Temp. Stability	0.1°C	0.1°C
Dimensions (W x D x H)		
Interior	19.5 x 20 x 26 in (49.5 x 50.8 x 66 cm)	
Exterior	25.3 x 27.3 x 76 in (64.3 x 69.3 x 193 cm)	
Weight	316 lbs (143.3 kg)	400 lbs (182 kg)
Electrical	100-120 VAC, 50/60 Hz	110-120 VAC, 50/60 Hz





Ultra Low Temperature Freezers



- Designed to utilize standard racks
- Offers high efficiency with low noise by utilizing two high efficiency compressors that keep decibel levels low
- Interior of the unit features a triple gasket seal, vacuum relief port, five double walled insulated doors & 5^{1/2} - 6 in of urethane insulation in critical areas
- Units are made in the USA and are UL and C-UL listed

Cat. No.	ABT-115V-1786	ABT-115V-2186
Style	Upright	Upright
Interior Volume	17 cu.ft.	21 cu.ft.
Temperature range	-86°C to -50°C	-86°C to -50°C
Upright freezer rack capacity	20 ea.	25 ea.
Exterior (W x H x D)	37.6 x 36.3 x 79.6 in	43.3 x 36.3 x 79.6 in
# of 2" box capacity	320 ea.	400 ea.
Electrical	115V, 60Hz, 16 AMP	115V, 60Hz, 16 AMP

Ultra Low Temp Benchtop/Undercounter Freezer



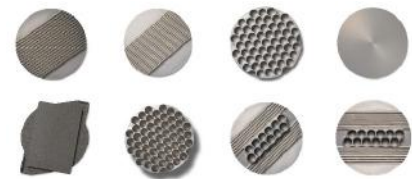
- Single compressor technology
- Low energy consumption
- Low noise level
- Low heat dissipation
- Insulated inner doors
- Heated door frame
- 100% HCFC/CFC free
- Porthole for external temperature probes
- Filterless construction

Cat. No.	ES59871-003
Style	Undercounter/benchtop
Interior volume	0.3 cu.ft.
Temperature range	-86°C to -40°C
Insulation	4.7 in
Exterior (W x H x D)	15.75 x 24.8 x 26.18 in
Automatic defrost	No
Electrical	110V

Controlled Rate Freezers

Liquid nitrogen free and cryogen free controlled rate freezer for research into the cryopreservation of a wide range of material including: embryos, stem cells, mammalian cells, spermatozoa, antibodies, tissue sections and rodent organs. The controlled rate freezer (CRF) brings accuracy, precision and reproducibility to biological cryopreservation.

- Accurate and reproducible control of cooling rates and sample temperatures
- Easy to use and samples can be nucleated/seeded in-situ
- Linear and non-linear cooling profiles
- Low running costs: estimated at 1% of liquid nitrogen controlled rate freezing
- Temperature remains at -100°C at the end of cycle for straw applications until freezer is switched off
- Uninterruptible power supply, complete cycle run if power fails (supplied as an optional accessory)



Cat. No.	Description	UOM
ES55192-H00	Controlled rate freezer, plate for 16 x 0.5 mL CBS high security straws	Each
ES55192-H01	Controlled rate freezer, plate for 18 x 0.3 mL IMV straws	Each
ES55192-H02	Controlled rate freezer, plate for 55 x 1.8 mL cryovials (0.5 mL max fill)	Each
ES55192-H03	Controlled rate freezer, flat plate for various items/vessels	Each
ES55192-H04	Controlled rate freezer, plate for 1 x SBS microplate	Each
ES55192-H05	Controlled rate freezer, plate for 55 x 1.8 mL cryovials (1.0 mL max fill)	Each
ES55192-H06	Controlled rate freezer, plate for 10 x 0.5 mL CBS high security straws & 12 x 1.8 mL cryovials (0.5 mL max fill)	Each
ES55192-H07	Controlled rate freezer, plate for 12 x 0.3 mL IMV straws & 12 x 1.8 mL cryovials (0.5 mL max fill)	Each

Undercounter Freezer



- Two fixed shelves
- Keyed door lock
- Magnetic door gasket for positive seal
- Leveling legs
- ECO friendly

Cat. No.	PH-ABT-HC-UCBI-0420
Style:	Undercounter
Interior Volume:	4.2 cu.ft.
Temperature range:	-15°C to -25°C
Exterior (W x H x D):	23.75 x 24.5 x 33.375 in
Electric	115V, 60Hz, 1.5 AMP

Undercounter Refrigerator



- Keyed door lock
- Magnetic door gasket for positive seal
- Leveling legs
- Led interior light
- Three adjustable shelves with guard rail on back to prevent product from being pushed against the back wall
- Energy star certified for pharmacy refrigerators and freezers

Cat. No.	PH-ABT-HC-UCFS-0504G
Style:	Undercounter
Interior Volume:	5.2 cu.ft.
Temperature range:	2°C to 8°C
Exterior (W x H x D):	23.75 x 24 x 32.125 in
Electric	115V, 60Hz, 1.3 AMP

Lab Refrigerators



	Compact	Upright ECO refrigerator		Upright refrigerator	
Cat. No.	CRT-ABT-HC-10PG	CRT-ABT-HC-S16G	CRT-ABT-HC-S26S	NSWDR231WWG/0	NSWDR492WWG/0
Style:	Compact	Upright	Upright	Upright	Upright
Interior Volume:	10.5 cu.ft.	16 cu.ft.	26 cu.ft.	23 cu.ft.	49 cu.ft.
Temperature range:	20°C to 25°C	1°C to 10°C	1°C to 10°C	1°C to 10°C	1°C to 10°C
Exterior (W x H x D):	23.75 x 26.5 x 59 in	25 x 29.75 x 79 in	28.375 x 36.5 x 81.75 in	26.875 x 34.75 x 82.5 in	34.75 x 54 x 82.5 in
Electric	115V, 60Hz, 2.3 AMP	115V, 60Hz, 3 AMP	115V, 60Hz, 3 AMP	115V, 60Hz, 3 AMP	115V, 60Hz, 4.5 AMP

Upright ECO Freezer

- Six fixed shelves
- Keyed door lock
- Magnetic door gasket for positive seal
- Leveling legs
- ETL listed
- Energy star certified
- Manual defrost
- Probe access port (3/4")

Cat. No.	ABT-HC-MFP-20
Style:	Upright
Interior Volume:	20 cu.ft.
Temperature range:	-15°C to -25°C
Exterior (W x H x D):	30.75 x 29 x 74.625 in
Electric	115V, 60Hz, 5.5 AMP, 1/2 HP





Research Autoclave

- Designed specifically for non-medical research use
- Fully automatic; just press start
- Extremely compact
- Built in water tank, does not require an external water supply



Cat. No.	ES59757	ES59755	ES59753
Chamber volume	8 Liters	18 Liters	28 Liters
Max. pressure	29 PSI / 2 bar	29 PSI / 2 bar	30.5 PSI / 2.4 bar
Chamber dimensions	6.7 x 12.5 in (17 x 31 cm)	9.8 x 13.77 in (24.8 x 35 cm)	12.6 x 16.4 in (32 x 41.7 cm)
Dimensions (W x D x H)	20 x 13.5 x 12.9 in (51 x 34 x 33 cm)	22 x 17.5 x 15.7 in (56 x 44.5 x 40 cm)	25 x 25 x 22 in (63.5 x 63.5 x 55.9 cm)
Weight:	74 lbs (33 kg)	89 lbs (40 kg)	209 lbs (95 kg)
Electrical	115-230V, 50/60 Hz, 950W	115-230V, 50/60 Hz, 1600W	115V, 50/60 Hz, 1750W

Autoclavable Bags

- Heavy gauge polypropylene (PP) that will withstand autoclaving temperatures up to 136°C
- All bags have a large white marking area
- Designed to resist stretching and poking, these bags are leak-resistant and have seamless bottoms



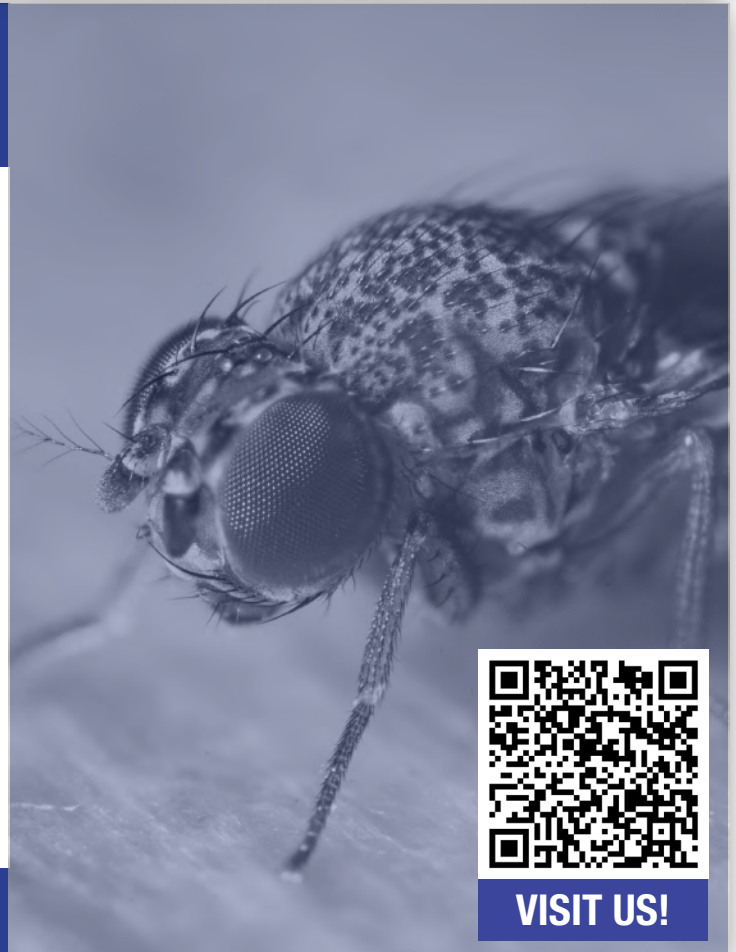
Cat. No.	Description	UOM
ES86666	8.5 x 11 in (21.6 x 28 cm), red, biohazard	100/case
ES86668	12.2 x 26 in (31 x 66 cm), red, biohazard	200/case
ES86668C	12.2 x 26 in (31 x 66 cm), clear, biohazard	200/case
ES86669	24 x 32 in (61 x 81.3 cm), red, biohazard	200/case
ES86669C	24 x 32 in (61 x 81.3 cm), clear, biohazard	200/case

Drosophila Supplies

Bottles | Vials | Plugs | Fly Workstation | Media & more!



Contact us or visit our website for full line of drosophila supplies



VISIT US!

New high purity chemicals and highly practical consumables!

Contact Info@AzerSci.com for more information.



Evolution Syringe Tips

Ultra Low Temperature Freezers



Black Microplates

DNA Mini, Mid, & Maxi Kits





Azer Scientific

Serving Scientists Who Change The World®



701 Hemlock Road, Morgantown PA 19543



1-877-770-2937



Info@AzerSci.com



www.AzerSci.com



An ISO 13845: 2016 Certified Company

Connect with Us:    